

# **AUTOMATIC AIRMIX® GUN**

## **AXC**

***Disassembly / Reassembly***

### **TRANSLATION FROM THE ORIGINAL MANUAL**

***IMPORTANT : Before assembly and start-up, please read and clearly understand all the documents relating to this equipment (professional use only).***

THE PICTURES AND DRAWINGS ARE NON CONTRACTUAL. WE RESERVE THE RIGHT TO MAKE CHANGES WITHOUT PRIOR NOTICE.

#### **KREMLIN - REXSON**

150, avenue de Stalingrad

93 245 - STAINS CEDEX – France

**☎** : 33 (0)1 49 40 25 25      **Fax** : 33 (0)1 48 26 07 16

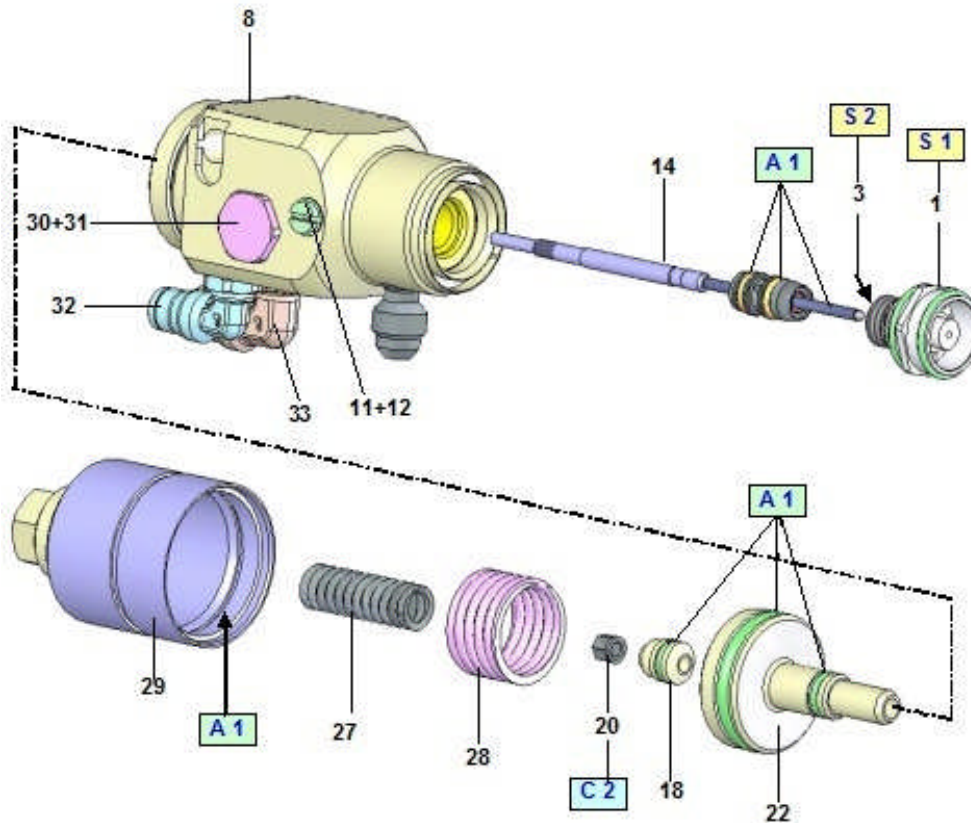
**[www.kremlin-rexson.com](http://www.kremlin-rexson.com)**



**CAUTION :**

Before any intervention on the gun, shut off the compressed air supply and depressurize the circuits controlling the opening of the gun.

**The gun is manufactured under the ATEX agreement and can not be modified. KREMLIN REXSON will not be held responsible for any failure to comply with that instruction.**



Index	Instructions	Description	Part number
<b>A 1</b>	PTFE grease	"TECHNILUB" grease (10 ml)	560.440.101
<b>C 2</b>	Low strength - Aneorobic Adhesive	Loctite 222	-
<b>S 1</b>	Screwing torque : 24 Nm / 17.7 ft/lbs		
<b>S 2</b>	Screwing torque : 2 Nm / 1.47 ft/lbs		

Before removing a component of the gun, some precautions have to be taken :

- Empty out the paint inside the cup or the receiver.
- Fill the cup or the receiver with cleaning solvent.
- Decrease the supply air pressure of the gun.
- Spray the solvent until it runs clear.
- Shut off the supply air pressure of the gun.
- Trigger the gun to depressurize the circuit.
- Empty out the solvent when using a gravity cup.
- Remove the part to be cleaned or changed.

**Before reassembling the different components, some precautions must be taken :**

- Clean all the parts with the appropriate cleaning solvent and a brush.
- Install new seals if it is necessary after having lubricated them with PTFE grease.
- Install new parts if it is necessary.

#### ▪ CHANGING THE MOTOR

Shut off the gun air and material supplies. Depressurize the circuits.

Separate the gun from its fixing bracket (ind. C) unscrewing the M8 nut located at the end of the rod.

Install the new gun on its bracket and fix it installing the washer and the nut.

#### ▪ SEAT HOLDER (1)

Take off the air cap, then unscrew the seat holder (1) with the wrench (35) supplied with the gun.

Clean the inside of the gun. If necessary, change with a new assembly (refer to spare parts, ind. 1).

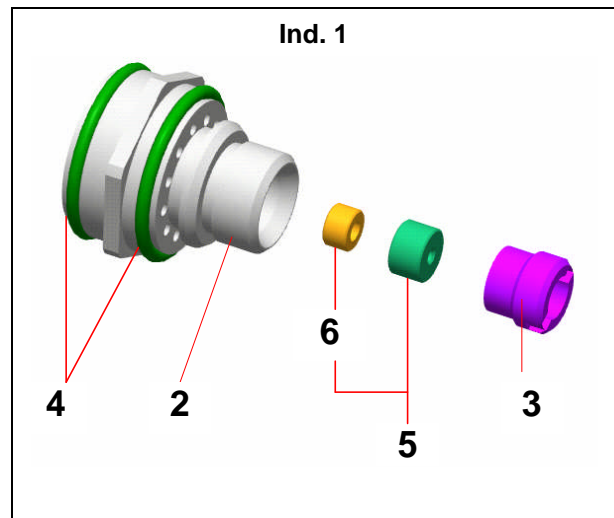
Unscrew the screw (3) by means of a screwdriver, take off the seat (5) and change it.

Reinstall the seat according to the above diagram (tightness cone towards the needle). Do not forget to install the seal seat (6).

Reinstall the parts in the reverse order of the disassembly sequence.

Change the 2 seals (4).

Comply with the screwing torques.



#### ▪ CARTRIDGE AND NEEDLE (14)

Unscrew the cylinder (29) - (pay attention to the springs 27 and 28).

Take on the strainer (18) and slide it to its maximum backwards.

By means of pliers, hold the visible part of the needle and with a wrench, unscrew and put aside the nut (20).

Take off the strainer (18).

Put aside the aircap (70), the nozzle (78) and the seat-holder (1).

Unscrew the leakage detector (11) of 2 turns.

Slide frontwards the needle and hit slightly in the axis to remove the cartridge-needle assembly (14).

Position the new cartridge-needle assembly positioning it to the front.

➡ **IMPORTANT : with a tube, push the cartridge until butting.**

Screw the leakage detector (11).

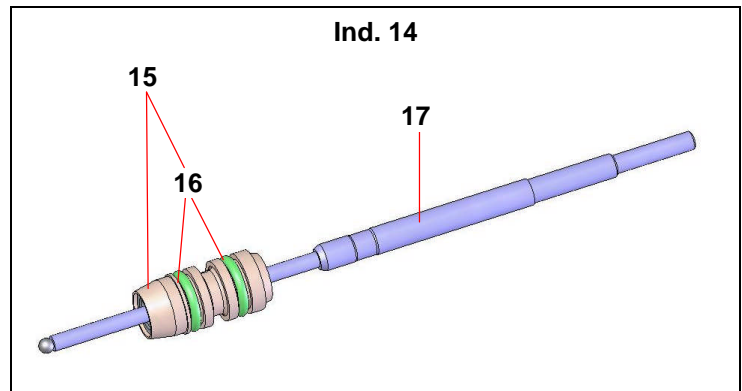
Position the piston (22) and the strainer (18) on the rear part of the needle.

Screw and lock firmly the nut (20). Replace the parts at the back of the gun.

Screw the seat-holder (1), tighten it respecting the recommended screwing torque.

Reinstall the nozzle (78) and the aircap (70).

Nota : You can change the cartridge (15) without changing the needle (17), if it does not show evidence of damage. However, it is always better to change the 2 parts (14) to get a correct tightness.



Before reassembling the different components :

- Clean the parts with the appropriate cleaning solvent by means of a brush,
- Install new seals after having lubricated them with PTFE grease,
- Install new parts if necessary.