

# **AUTOMATIC AIRMIX® GUN**

## **ATX**

***Disassembly / Reassembly***

### **TRANSLATION FROM THE ORIGINAL MANUAL**

***IMPORTANT : Before assembly and start-up, please read and clearly understand all the documents relating to this equipment (professional use only).***

THE PICTURES AND DRAWINGS ARE NON CONTRACTUAL. WE RESERVE THE RIGHT TO MAKE CHANGES WITHOUT PRIOR NOTICE.

#### **KREMLIN - REXSON**

150, avenue de Stalingrad

93 245 - STAINS CEDEX – France

☎ : 33 (0)1 49 40 25 25      Fax : 33 (0)1 48 26 07 16

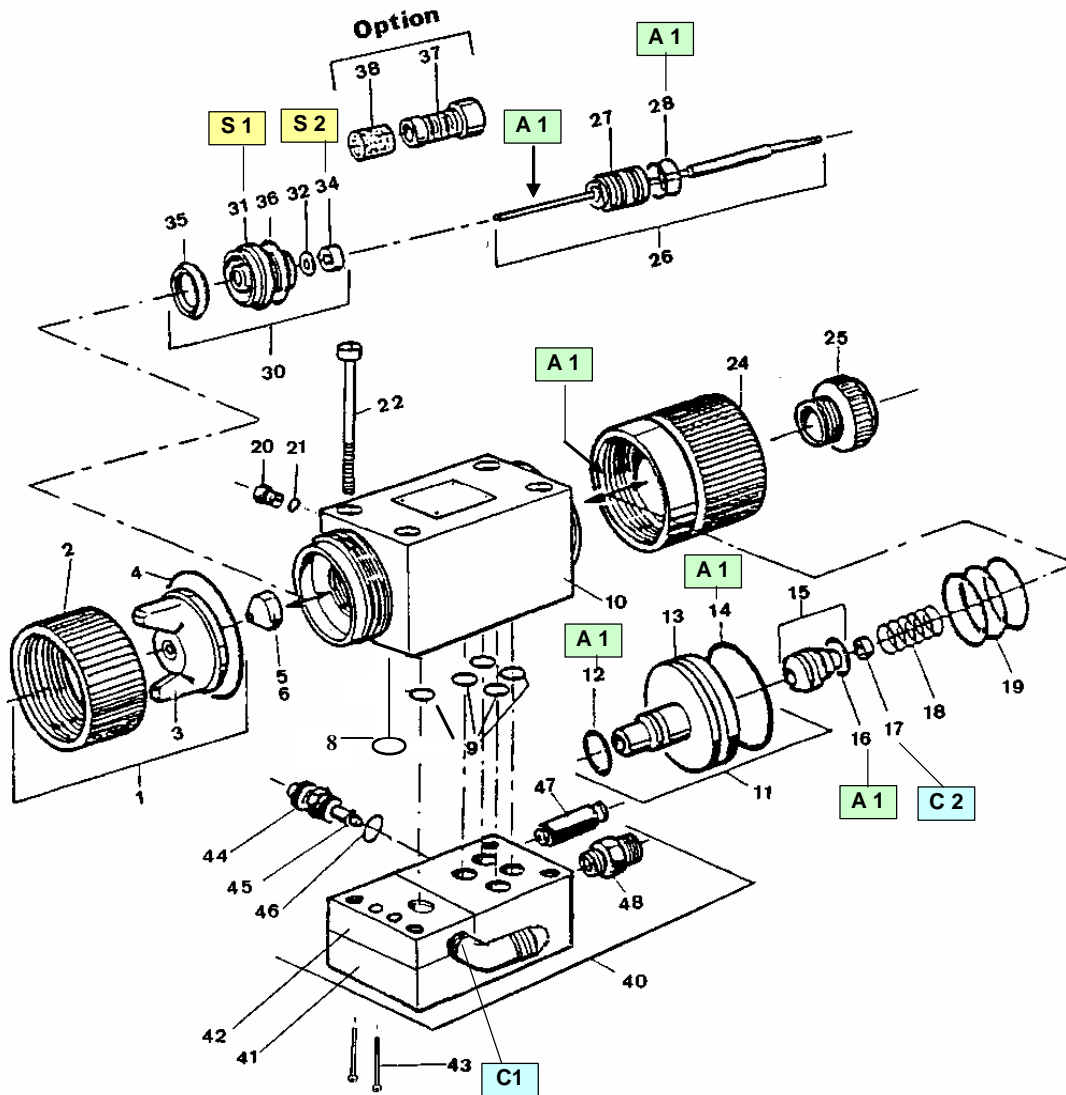
**[www.kremlin-rexson.com](http://www.kremlin-rexson.com)**



**CAUTION :**

Before any intervention on the gun, shut off the compressed air supply and depressurize the circuits controlling the opening of the gun.

**The gun is manufactured under the ATEX agreement and can not be modified.  
KREMLIN REXSON will not be held responsible for any failure to comply with that instruction.**



Index	Instructions	Description	Part number
<b>A 1</b>	PTFE grease	"TECHNILUB" grease (10 ml)	560.440.101
<b>C 1</b>	Medium strength Anaerobic Pipe sealant	Loctite 577	-
<b>C 2</b>	Low strength - Aneorobic Adhesive	Loctite 222	-
<b>S 1</b>	Screwing torque : 24 Nm / 17.7 ft/lbs		
<b>S 2</b>	Screwing torque : 2 Nm / 1.47 ft/lbs		

Before removing a component of the gun, some precautions have to be taken :

- Empty out the paint inside the cup or the receiver.
- Fill the cup or the receiver with cleaning solvent.
- Decrease the supply air pressure of the gun.
- Spray the solvent until it runs clear.
- Shut off the supply air pressure of the gun.
- Trigger the gun to depressurize the circuit.
- Empty out the solvent when using a gravity cup.
- Remove the part to be cleaned or changed.

**Before reassembling the different components, some precautions must be taken :**

- **Clean all the parts with the appropriate cleaning solvent and a brush.**
- **Install new seals if it is necessary after having lubricated them with PTFE grease.**
- **Install new parts if it is necessary.**

#### ▪ CHANGING THE SPRAY GUN

Shut off the air and fluid supplies of the gun.

Depressurize the circuits.

Remove the 4 screws (22) and disassemble the gun from its base.

Fit the new gun on the base and change the seals (8 and 9) and re-fit the 4 screws (22).

#### ▪ SEAT-HOLDER (30)

Remove air cap. With the wrench (50) supplied with the gun, unscrew seat-holder (31).

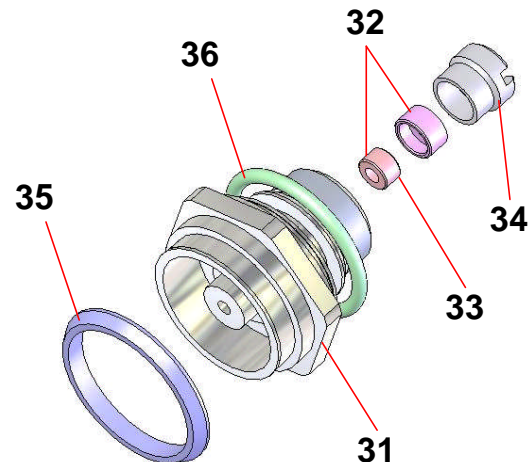
Clean inside of the gun. If required, replace seat-holder (refer to spare parts, ind. 30).

Unscrew the screw (34) with a screwdriver, remove the seat (32) and replace it.

Reinstall the seat as shown opposite (tightness cone towards the needle). Do not forget the seat seal (33) for stainless steel seat.

Reassemble in reverse order.

Nota : Before installing seal (35), soak it in a hot liquid (water or oil).



▪ **CARTRIDGE AND NEEDLE**

Unscrew the needle (24) - (be careful with springs 18 and 19).

Take driving-piston (15) and disengage it so that the rear part of the needle appears it from the rear side of the gun body.

Hold the rear side of the needle with a pliers and thanks to a spanner unscrew and remove nut (17).

Remove driving-piston (15).

Unscrew air cap (1), spray tip (5) as well as the seat-holder (30) from the gun.

Loosen fluid leakage detector (20) by two turns.

Firmly, push needle to extract it as well as cartridge-needle assembly (26) from the front side of the gun body.

Insert the cartridge and needle assembly into the front side of the gun.

➡ **IMPORTANT : thanks to a brass tube with a suitable diameter, firmly push cartridge to put it back properly inside the gun.**

Screw fluid leakage detector (20).

Place the piston (11) and the driving-piston (15) on the back part of the needle.

Screw and firmly install the nut (17). Reassemble the parts at the back part of the gun.

Screw the seat-holder (30), tighten it and respect recommended screwing torque.

Reinstall the nozzle (5) and the air cap (1).

**Before reassembling the different components :**

- Clean the parts with the appropriate cleaning solvent using a brush,
- Install the seals if necessary after having lubricated them with PTFE grease,
- Install new parts if necessary.