

AUTOMATIC AIRMIX® GUN

AVX

Disassembly / Reassembly

TRANSLATION FROM THE ORIGINAL MANUAL

IMPORTANT : Before assembly and start-up, please read and clearly understand all the documents relating to this equipment (professional use only).

THE PICTURES AND DRAWINGS ARE NON CONTRACTUAL. WE RESERVE THE RIGHT TO MAKE CHANGES WITHOUT PRIOR NOTICE.

KREMLIN - REXSON

150, avenue de Stalingrad

93 245 - STAINS CEDEX – France

☎ : 33 (0)1 49 40 25 25 **Fax** : 33 (0)1 48 26 07 16

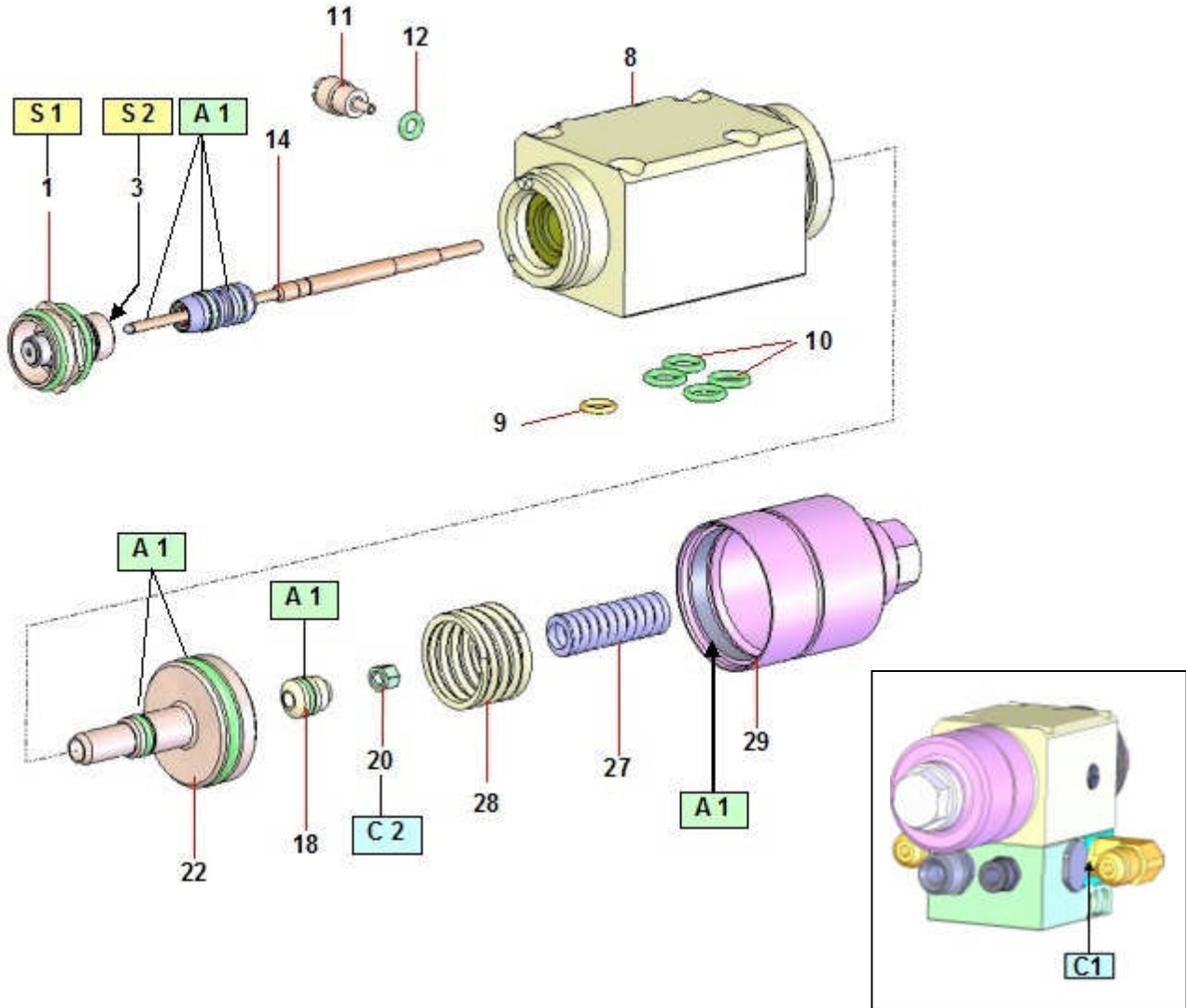
www.kremlin-rexson.com



CAUTION :

Before any intervention on the gun, shut off the compressed air supply and depressurize the circuits controlling the opening of the gun.

The gun is manufactured under the ATEX agreement and can not be modified. KREMLIN REXSON will not be held responsible for any failure to comply with that instruction.



Index	Instructions	Description	Part number
A 1	PTFE grease	"TECHNILUB" grease (10 ml)	560.440.101
C 1	Medium strength Anaerobic Pipe sealant	Loctite 577	-
C 2	Low strength - Aneorobic Adhesive	Loctite 222	-
S 1	Screwing torque : 24 Nm / 17.7 ft/lbs		
S 2	Screwing torque : 2 Nm / 1.47 ft/lbs		

Before removing a component of the gun, some precautions have to be taken :

- Empty out the paint inside the cup or the receiver.
- Fill the cup or the receiver with cleaning solvent.
- Decrease the supply air pressure of the gun.
- Spray the solvent until it runs clear.
- Shut off the supply air pressure of the gun.
- Trigger the gun to depressurize the circuit.
- Empty out the solvent when using a gravity cup.
- Remove the part to be cleaned or changed.

Before reassembling the different components, some precautions must be taken :

- **Clean all the parts with the appropriate cleaning solvent and a brush.**
- **Install new seals if it is necessary after having lubricated them with PTFE grease.**
- **Install new parts if it is necessary.**

▪ CHANGING THE SPRAY GUN

Shut off the air and fluid feeds to the gun. Depressurize the systems.

Disassemble the gun from its base removing the 4 screws.

Fit the new gun on the base changing the seals (9 and 10) and replace the 4 screws.

▪ SEAT HOLDER (1)

Take off the air cap, then unscrew the seat holder (1) with the wrench (35) supplied with the gun.

Clean the inside of the gun. If necessary, mount a new assembly (refer to spare parts, ind. 1).

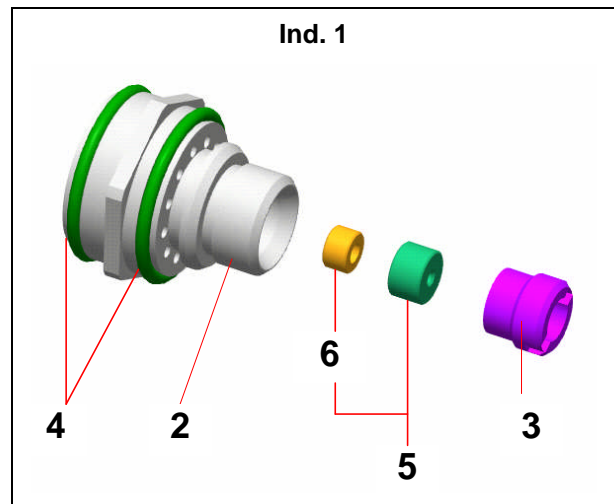
Take off the screw (3) by means of a screwdriver, the seat (5) and change it.

Install the seat according to the drawing above (tightness cone towards the needle). Make sure that seat seal (6) is installed.

Assemble parts in the reverse order of the disassembly.

Change the 2 seals (4).

Respect the screwing torques.



▪ CARTRIDGE AND NEEDLE (14)

Unscrew the cylinder (29) - (pay attention to the springs 27 and 28).

Take the retainer (18) and slide it to its maximum backwards.

With pliers, hold the needle visible part and, with a wrench, unscrew and put aside the nut (20).

Take off the retainer (18).

Put aside the air cap (70), the nozzle (78) and the seat holder (1).

Unscrew the leakage detector (11) of 2 turns.

Slide frontwards the needle and hit lightly in the axis to remove the cartridge-needle assembly (14).

Position the new cartridge-needle assembly positioning it to the front.

➡ **IMPORTANT : with a tube, push the cartridge until butting.**

Screw the leakage detector (11).

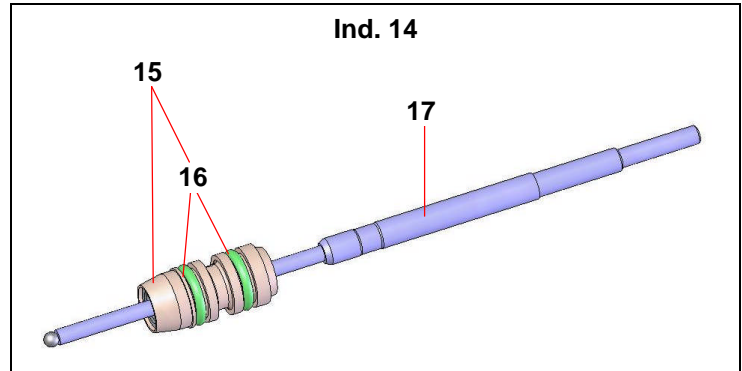
Place the piston (22) and the retainer (18) at the rear part of the needle.

Screw and lock firmly the nut (20). Replace the parts at the back part of the gun.

Screw the seat holder (1), tighten it respecting the recommended screwing torque.

Position the nozzle (78) and the air cap (70).

Nota : You can change the cartridge (15) without changing the needle (17), if it does not show evidence of damage. However, it is always better to change the 2 parts (14) to get a correct tightness.



Before reassembling the different components :

- Clean the parts with the appropriate cleaning solvent by means of a brush,
- Install new seals after having lubricated them with PTFE grease,
- Install new parts if necessary.