

AUTOMATIC AIRMIX® GUN

AXC

TECHNICAL FEATURES

TRANSLATION FROM THE ORIGINAL MANUAL

IMPORTANT : Before assembly and start-up, please read and clearly understand all the documents relating to this equipment (professional use only).

THE PICTURES AND DRAWINGS ARE NON CONTRACTUAL. WE RESERVE THE RIGHT TO MAKE CHANGES WITHOUT PRIOR NOTICE.

KREMLIN - REXSON

150, avenue de Stalingrad

93 245 - STAINS CEDEX – France

☎ : 33 (0)1 49 40 25 25 **Fax** : 33 (0)1 48 26 07 16

www.kremlin-rexson.com

1. DESCRIPTION

The AXC gun is designed for applying paints, primers, adhesives in automatic installations. It can be installed on fixed brackets, automatic machines or robots.

It is a compact gun without base. It is supplied without aircap or nozzle.

2. TECHNICAL FEATURES

FEATURES	GUN, model AXC
Maximum air supply pressure	6 bar / 87 psi
Maximum fluid supply pressure	200 bar / 2900psi
Minimum control air pressure	3 bar / 43.5 psi
Pression d'air d'utilisation recommandée	From 1 to 3 bar / from 14.5 to 43.5 psi
Flow rate	Depending upon nozzle (refer to nozzles' chart)
Weight (gun without aircap)	480 g / 1.06 lb
Weight (gun with nozzle and aircap)	535 g / 1.2 lb
Maximum operating temperature	50°C / 122°F
Air consumption	From 3 to 7.5 m ³ /h
Wetted parts	Stainless - Treated stainless
Seat (removal)	Stainless
Material circulation	Without
Noise level (at 1m - depending upon ISO 3746 standard)	77 dBa

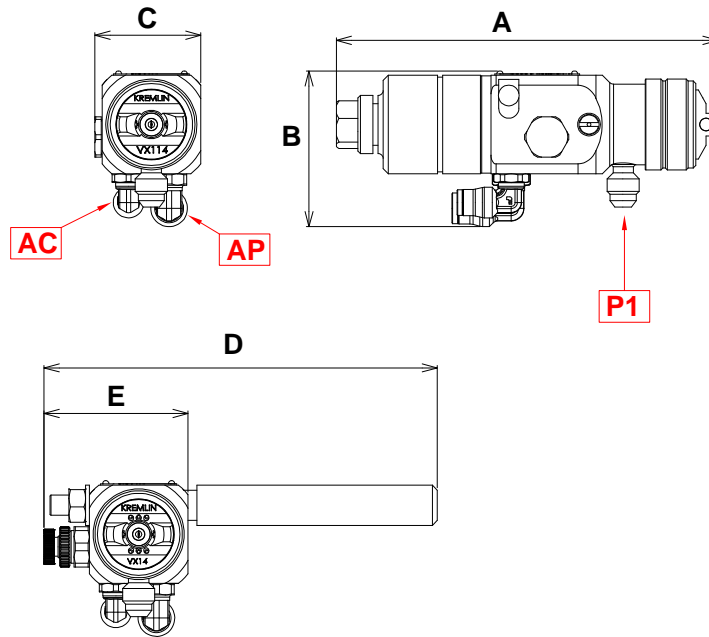
▪ AIR AND FLUID FITTINGS WITH HOSES

Supply	Fittings	Hoses
Material (P1)	F 1/4 NPS - M 1/2 JIC	Blue AIRMIX® hose conductive , Ø 4,8 mm (3/16") or 6,35 mm (1/4")
Atomizing air (AP)	F 1/4 NPS - Quick fit for tube 6x8	Polyamide hose, Ø 6 x 8
Control air (AC)	F 1/8 NPS - Quick fit for tube 4x6	Polyamide hose, Ø 4 x 6



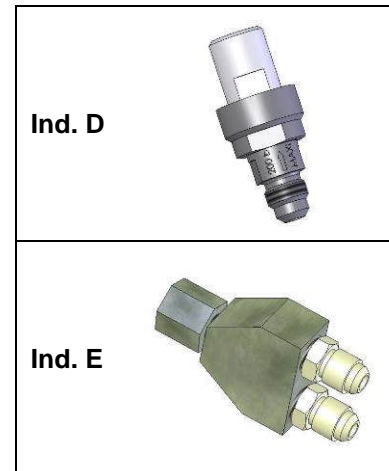
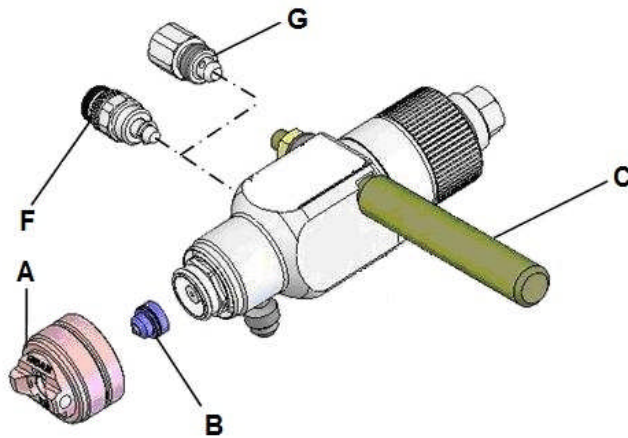
The grounding of the gun will be carried out by means of the bracket (also grounded) or by means of a conductive material hose.

▪ **DIMENSIONS**



Rep.	A	B	C	D	E
mm	151	62	42	156	57

▪ **OPTIONS**




IND.	OPTIONS	DESCRIPTION
A	Airmix® aircap	VX 114 (aircap recommended for automatic gun)
B	Airmix® nozzle	Choose it in the chart of the Airmix® nozzles
C	Fixing bracket	Bracket of the gun : rod, model Ø 16, length 100 mm./ 4"
D	Airmix® filter	Filter fitted with a screen # 6 (MF 1/2 JIC)
E	Circulation assembly	Tee fitted with 2 fittings, model M 1/2 JIC that enable the circulation of the material
-	Kit for adjustable pattern	It consists of a VX14 aircap (ind. A), an air adjuster (ind. F) and a fitting for adjusting the fan (ind. G)

3. INSTALLATION

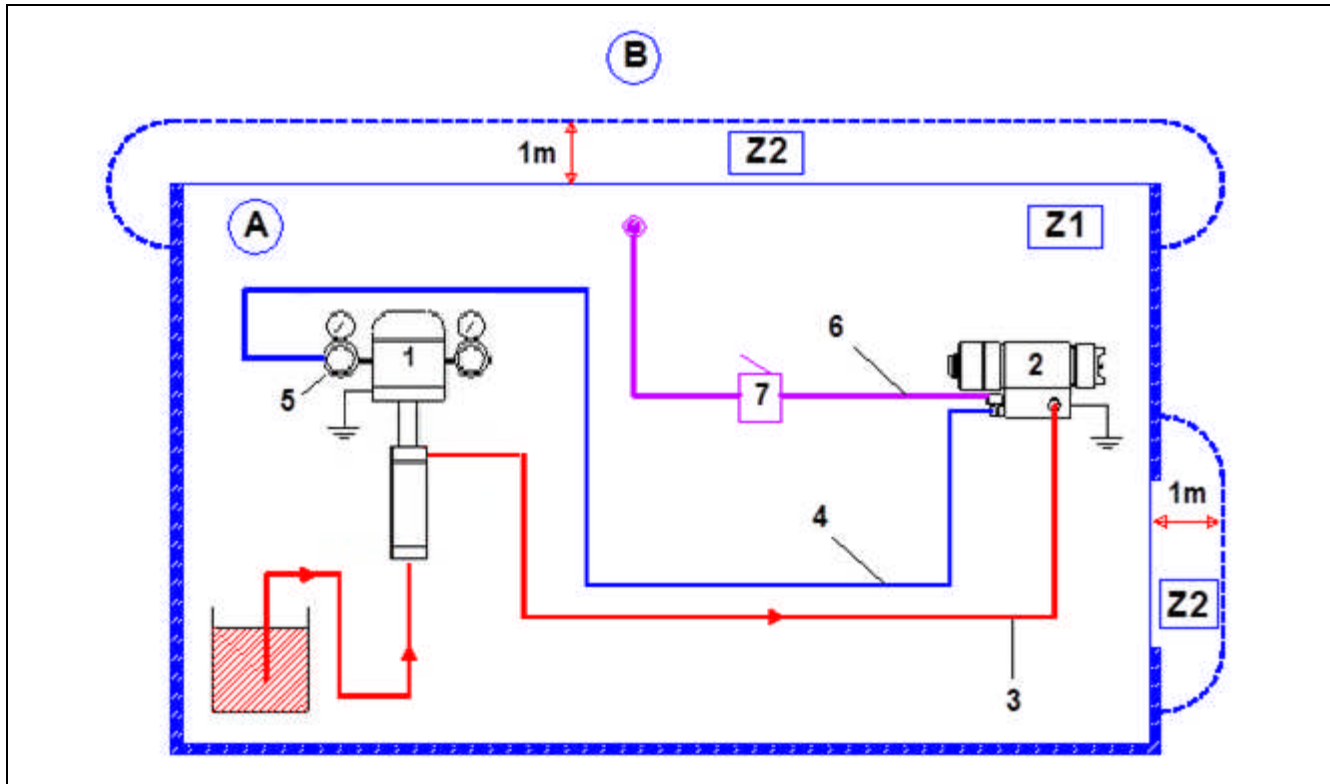
- DESCRIPTION OF THE LABEL MARKING

Marking in accordance with the ATEX Directive



KREMLIN REXSON STAINS FRANCE	Name and address of the manufacturer
AXC	Gun model
CE  II 2 G	II : group II 2 : class 2 Surface equipment meant to area where explosive atmospheres due to gas, vapours, mists are liable to appear from time to time in usual operating G : gas
P air : 6 bar / 87 psi	Gun air supply maximum pressure
P prod : 200 bar / 2900 psi	Maximum fluid pressure at the gun inlet
-	Number given by KREMLIN REXSON. The two first numbers indicate the manufacturing year.

▪ **INSTALLATION DIAGRAM**



Captions :

A	Explosive area area 1 (Z1) or area 2 (Z2) : spray booth	3	Fluid hose
B	Non explosive area	4	Conductive air hose (spraying air)
		5	Air regulator
1	Pump	6	Air hose (control air)
2	Airmix® automatic gun	7	3 way-valve or electrovalve

- 1 - By means of a fluid hose (3), connect the gun fluid fitting to the pump. Tighten firmly the fittings.
- 2 - By means of a **conductive** air hose (4), connect the gun 'Spraying air' fitting (2) to an air regulator (5) that can supply at least 3 bar / 43.5 psi (→ spraying air).
- 3 - By means of an air hose (6), connect the gun 'Control air' fitting to the valve or the electrovalve (7) that will control the opening and the closing of the gun.

A minimum pressure of 3 or 4 bar / 43.5 or 8 psi is necessary to control the gun (→ control air).



Nota : The gun (and its eventual base) **must be** grounded by, **at least**, one of the two next solutions :

- by means of the fixing device on the machine,
- by means of the conductive or static conductive fluid hose.

The ground resistance between the gun and the floor must be $\leq 1 \text{ M}\Omega$.



The 1 m / 39.37" distance indicated in these diagrams is given for information purposes only and hold harmless to KREMLIN REXSON. The user is responsible for the extraction and conditioning of the painting area where the equipment is used, for working conditions conditions (refer to EN 60079-10 standard). The 1 m / 39.37" distance may be modified if trials carried out by the user deem this necessary.