

LOW-PRESSURE PUMP

EOS 02-C85

Disassembly / Reassembly

TRANSLATION FROM THE ORIGINAL MANUAL

IMPORTANT : Before assembly and start-up, please read and clearly understand all the documents relating to the equipment (professional use only).

THE PICTURES AND DRAWINGS ARE NOT CONTRACTUAL. WE RESERVE THE RIGHT TO MAKE CHANGES WITHOUT PRIOR NOTICE.

KREMLIN - REXSON

150, avenue de Stalingrad

93 245 - STAINS CEDEX – France

☎ : 33 (0)1 49 40 25 25 **Fax** : 33 (0)1 48 26 07 16

www.kremlin-rexson.com



CAUTION :

Before any action on the pump, shut off the compressed air supply and depressurize the systems.

▪ **FLUID SECTION OR AIR MOTOR REPLACEMENT**

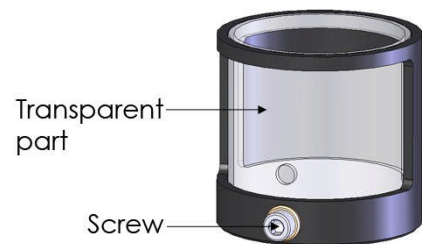
The pump is manufactured under the ATEX agreement and can not be modified. KREMLIN REXSON will not be held responsible for any failure to comply with that instruction.

**Guards (air motor cover, coupling shields, housings ...) have been designed for safe use of the equipment.
The manufacturer will not be held responsible for bodily injury or failure and / or damage to property due to removal or partial removal of the guards.**

Position the air motor piston in a high position before shutting off the compressed air and before depressurizing the system.

Disassemble the pump from its bracket and put aside the pump.

Unscrew the screw located on the protection housing with an Allen wrench of 5. Slide the transparent part of the protection housing to access to the parts of the coupling.



Extract the pin and the coupling axis. Disassemble the air motor from the fluid section.

When changing the air motor :

Put aside the pump air equipment. Assemble it on the new air motor.

Place the protection housing on the material flange of the fluid section, assemble the air motor and the fluid section with the coupling axis and the pin, the rods and the nuts.

Slide the transparent part of the protection housing to close it. Align the hole located on the transparent part of the protection housing and the screw of the protection housing. Screw the screw with an Allen wrench of 5 to fix the protection housing.

Position the whole on the wall mounted unit.

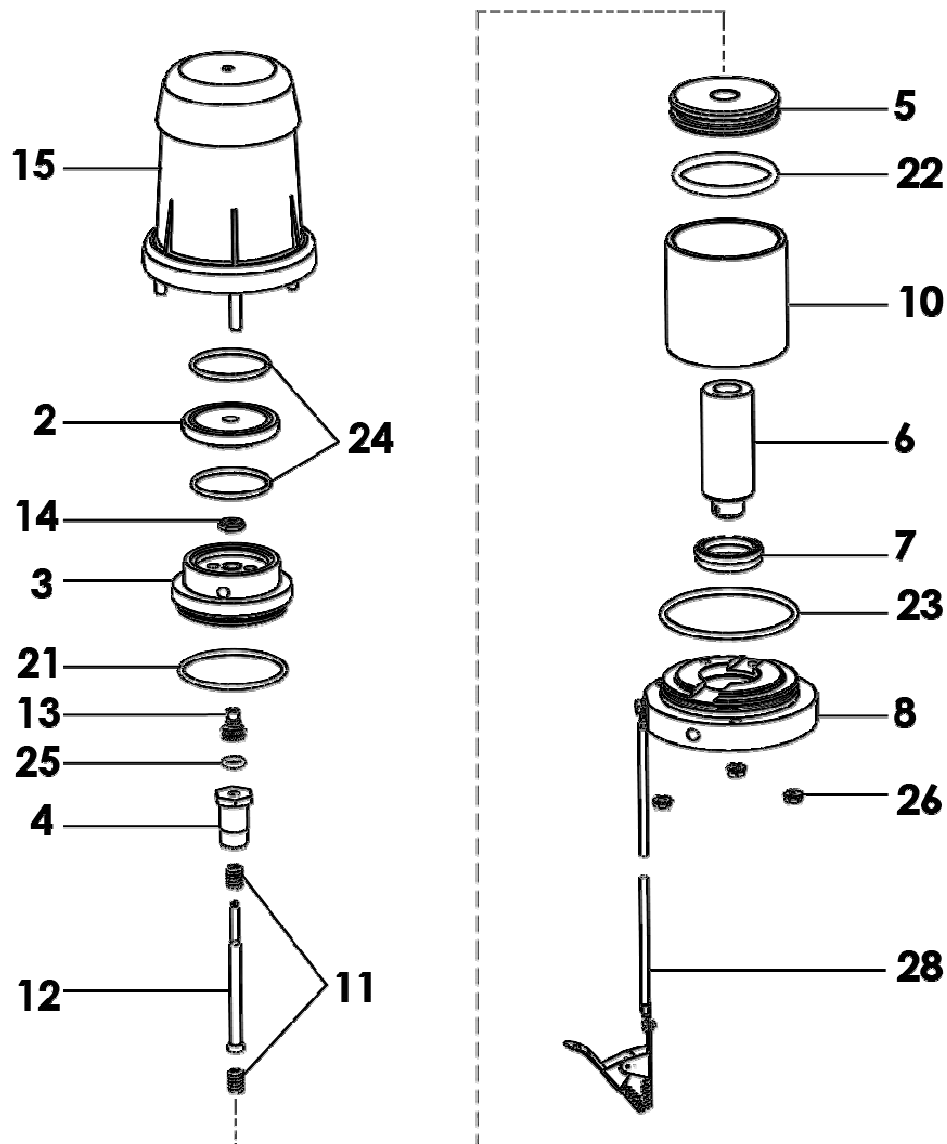
When changing the fluid section :

Place the protection housing on the material flange of the new fluid section, assemble the air motor and the fluid section with the coupling axis and the pin, the rods and the nuts.

Slide the transparent part of the protection housing to close it. Align the hole located on the transparent part of the protection housing and the screw of the protection housing. Screw the screw with an Allen wrench of 5 to fix the protection housing.

Position the whole on the wall mounted unit.

▪ **MOTOR**



➤ **MOTOR VALVE**

Disassemble the cover (15) by removing the 3 M6 nuts (26).

Unscrew motor valve (14) by holding driving-rod (12).

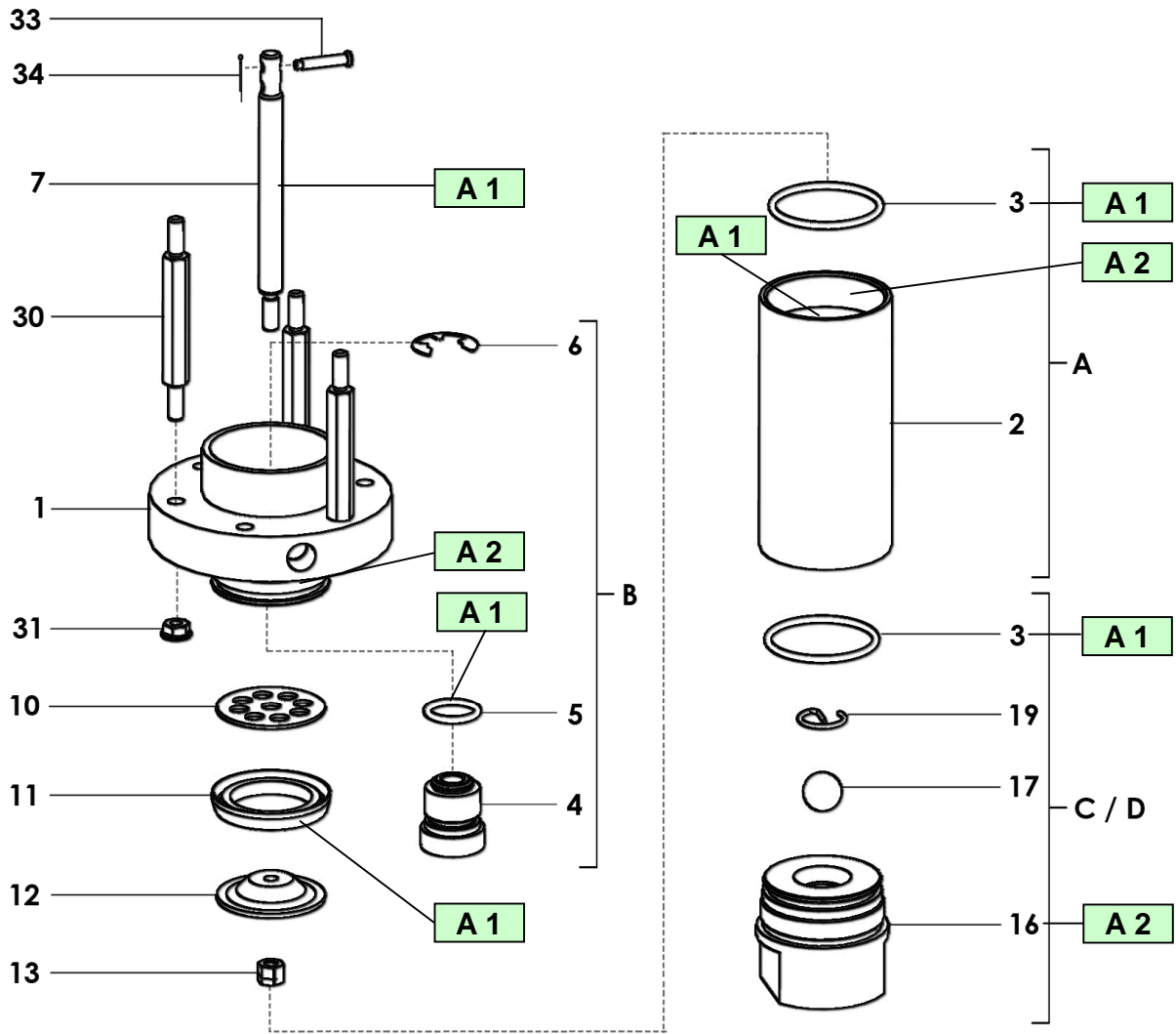
Reinstall the new motor valve (14) and block it on the driving-rod (12) by means of the two flat parts located at its end.

Reinstall cover (15) with its 3 nuts (26) ➡ **maximum screwing torque : 4mN / 2.95 ft/lbs**

Before reassembling the different components :

- Clean the parts with the appropriate cleaning solvent.
- Install new seals if it is necessary after having lubricated them with PTFE grease.
- Install new parts if it is necessary.

▪ FLUID SECTION



Index	Instructions	Description	Part number
A 1	PTFE grease	"TECHNILUB" grease (10 ml)	560.440.101
A 2	Graphite grease	Graphite grease box (1 kg / 2.204 lb)	560.420.005

➤ **SUCTION VALVE**

Unscrew suction valve body (16) from the cylinder.

The ball (17) is secured on the seat by means of a circlips (19).

Reinstall suction valve assembly and check if seal (3) is not worn or damaged.

➤ **EXHAUST VALVE**

Unscrew cylinder (2) and pull it downwards.

Unscrew nut (13) by holding fluid piston rod (7).

Check if valve seal (11) and fluid valve (12) are not worn or damaged.

➤ **CARTRIDGE**

Unscrew cylinder (2) and pull it downwards.

Separate motor piston rod (7) by removing connecting pin (33) with cotter pin (34).

Remove circlips (6) located in the pump body cup (1) and pull cartridge (4) downwards.

Reassembly :

Insert piston rod (7) into the new cartridge (4) - **from the top to the bottom** - to avoid damaging the seal.

Install piston rod with new cartridge assembly in pump body (1).

Install the cartridge by means of the circlips (6).

When remounting the other parts, be certain seals are installed.

Before reassembling the different components :

- Clean the parts with the appropriate cleaning solvent.
- Install new seals if it is necessary after having lubricated them with PTFE grease.
- Install new parts if it is necessary.