



## SPECIFICATIONS

# STAINLESS STEEL AIRMIX<sup>®</sup> PUMPS

model  
**20-50 F and 20-50 FT**

*Manual : 1003 573.032.212*

*Date : 23/03/10 – Supersede : 26/08/08*

*Modif. : Update*

## ORIGINAL MANUAL

**IMPORTANT** : before assembly and start-up, please read and clearly understand all documents relating to this equipment (professional use only).

PICTURES AND DRAWINGS ARE NON CONTRACTUAL. WE RESERVE THE RIGHT TO MAKE CHANGES WITHOUT PRIOR NOTICE.

### ADDITIONAL DOCUMENTATIONS FOR PUMPS. MODEL 20-50 F and 20-50 FT

<b>SPARE PARTS :</b>	Wall mounted unit	(doc. 573.120.050)
	Air motor	(doc. 573.045.050)
	Fluid section	(doc. 573.114.050)
	Reversing block	(doc. 573.087.040)
	Air supply	(doc. 573.403.050)
	Atomizing air kit	(doc. 573.035.050)

### **KREMLIN - REXSON**

150, avenue de Stalingrad  
93 245 - STAINS CEDEX – France

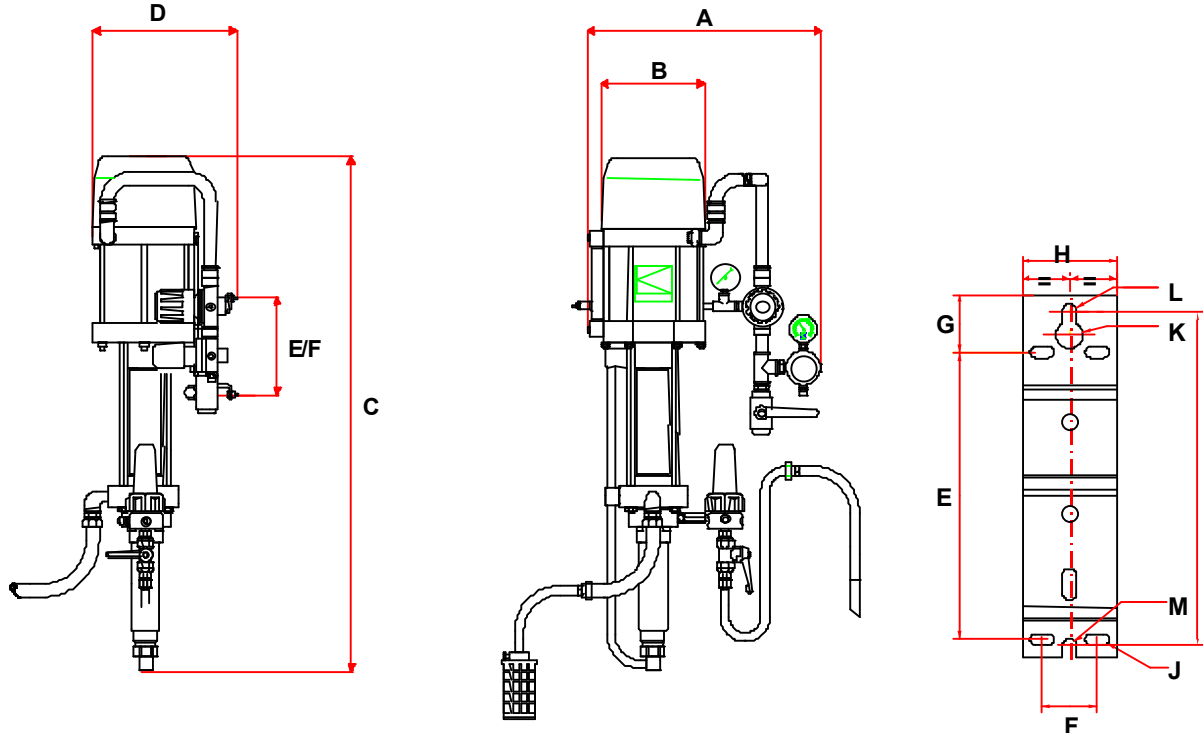
 : 33 (0)1 49 40 25 25      Fax : 33 (0)1 48 26 07 16

**www.kremlin-rexson.com**



## ■ DIMENSIONS

Ind.	mm	"	Ind.	mm.	"	Ind.	mm	"	Ind.	mm	"
A	470	18.5	B	220	8.7	C	975	38.4	D	270	10.63
E	182	7.16	F	35	1.38	G	36,5	1.43	H	60	2.36
I	211,5	8.3	J	Ø 7x 15	Ø 0.27x0.6	K	Ø 17	Ø 0.67	L	Ø 9	Ø 0.35
M	Ø 9	Ø 0.35									



## 2. SERVICING



### WARNING :

Before any action on the pump, shut off the compressed air supply and depressurize the systems by triggering the spray gun.

**The pump is manufactured under the ATEX agreement and can not be modified. KREMLIN REXSON will not be held responsible for any failure to comply with that instruction.**

### DISASSEMBLY / REASSEMBLY OF THE FLUID SECTION

**Guards (motor cover, coupling shields, connectors,...) have been designed for a safe use of the equipment.  
The manufacturer will not be held responsible for bodily injury or failure and / or property damage due to destruction, the overshadowing or the partial or total removal of the guards.**

Unscrew the fitting (38) and the screws (41 and 43) to remove the attachment fluid tube (39).

#### ■ SUCTION VALVE (DOC. 573.114.050)

Unscrew the suction valve (35) by holding cylinder (27).

The ball (22) is secured on the valve (35) by means of a circlips (21).

Clean the parts.

Reinstall the suction valve (35) and the seal (23). Replace them if necessary.

#### ■ EXHAUST VALVE AND MOBILE PACKING

Unscrew the cylinder (27) and pull it downwards.

Unscrew stuffing-box (33) to release GT seal (31) from exhaust valve (34).

Unscrew exhaust valve (34) by holding piston (24).

Remove ball (32).

Clean the parts and reinstall them. Replace seals if necessary.

#### ■ UPPER TIGHTNESS SEAL

Unscrew the four screws (30).

Remove tightness seal (28) by pulling discharge flange (25) downward.

Replace tightness seal (28), O-Rings (29 and 11).

Reinstall the parts in the reverse order of the disassembly sequence.

### **DISASSEMBLY / REASSEMBLY OF THE COUPLING (WITH BELLOWS)**

---

---

**Disassemble the fluid section prior to carrying out the following procedure:**

#### ■ BELLOWS

Unscrew nuts (14) from the tie-rods.

Remove suction flange (1) and cylinder (2) by pulling them downwards.

Remove screws (12) to disconnect suction bearing (3) from air motor.

Disconnect intermediate piston (9) from air motor rod.

Remove coupling parts.

Remove bellows flange (4) by unscrewing screws (13) to free the upper part of the bellows.

Unscrew skirt (8) to free the lower part of the bellows.

Replace bellows (5).

When installing bellows push it into skirt firmly (8).

Insert intermediate piston (9) into bellows (5) and screw the skirt at the piston end.

Insert bellows and piston (9) into the suction bearing (3).

Install flange (4) in the suction bearing and tighten the whole with screw (13).

Connect bellows-piston set to motor rod and secure the whole on the lower support of the air motor by using screws (12).

Reinstall fluid section piston (24) on intermediate piston (9).

Replace seals (11). Then install cylinder (2) and suction flange (1).

Install the whole on tie-rods and tighten it with nuts (14).

**Guards (motor cover, coupling shields, connectors,...) have been designed for a safe use of the equipment.**

**The manufacturer will not be held responsible for bodily injury or failure and / or property damage due to destruction, the overshadowing or the partial or total removal of the guards.**

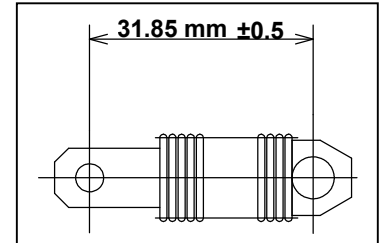
### ■ REVERSING BLOCK (DOC. 573.045.050)

Disassemble cover (32) by removing CHc screws (33).

Dissociate female yoke (12) from the reversing block lever (9).

Dismount reversing-block by removing the screws (10 and 8).

Reinstall the new reversing-block in the reverse order of the disassembly sequence.

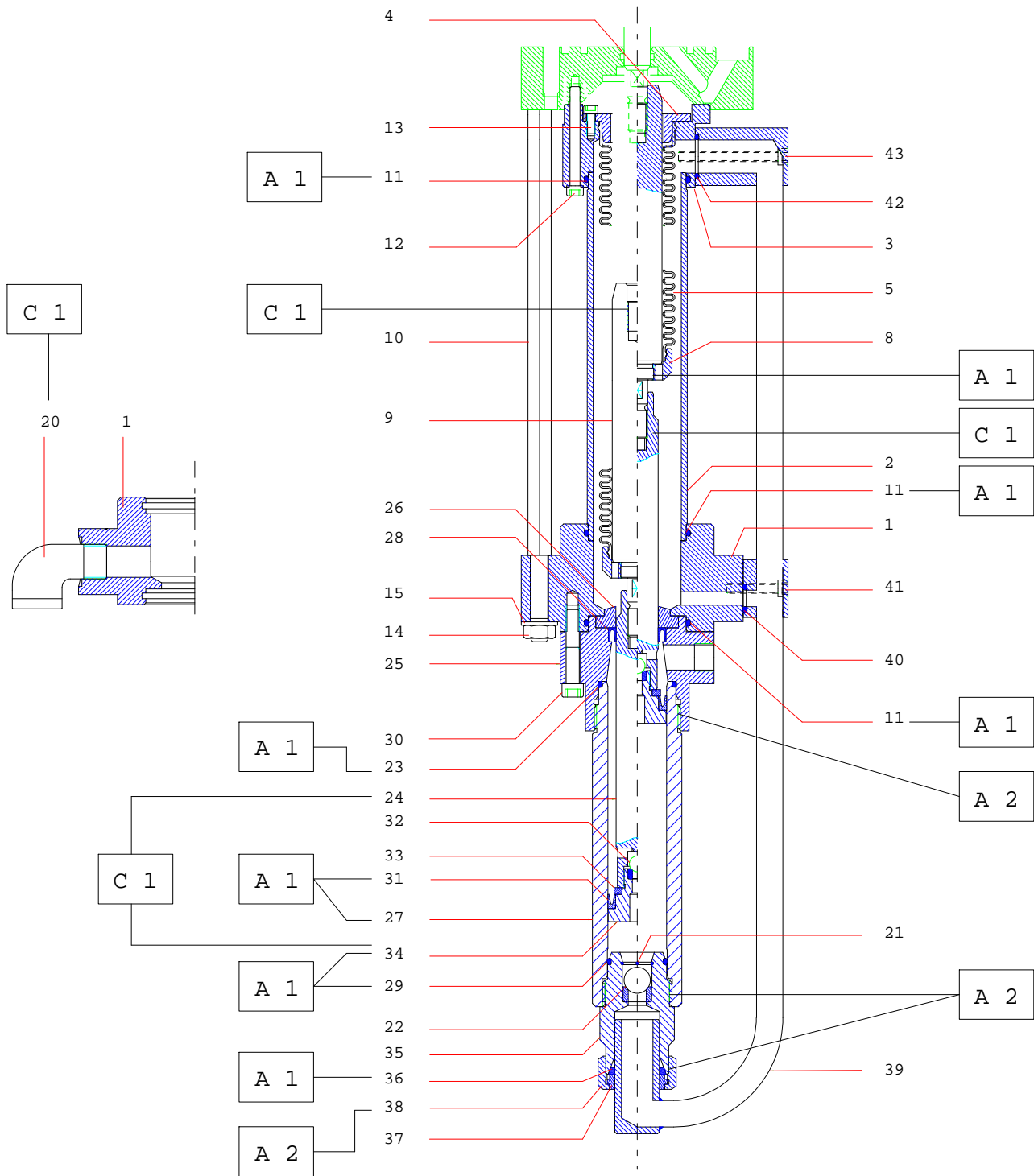


⚠ CAUTION : the number of spirals must equally be distributed on each fastening parts in order to get the above dimension.

**Before reassembling the different components :**

- Clean the parts with the appropriate cleaning solvent.
- Install new seals if it is necessary, after having lubricated them with PTFE grease.
- Lubricate the piston and the inside of the cylinder to prevent from damaging the seals.
- Install new parts if it is necessary.

**ASSEMBLY INSTRUCTIONS**



Index	Instruction	Description	Part number
<b>A1</b>	PTFE grease	'TECHNILUB' grease (10 ml)	560.440.101
<b>A2</b>	Graphite grease	Graphite grease box (1 kg / 2.204 lb)	560.420.005
<b>C1</b>	Medium strength Aneorobic Pipe Sealant	Loctite 577	