



**SPECIFICATIONS**

**AIRLESS PUMP**

**model 40-25**

*Manual : 1003 573.028.212*

*Date : 23/03/10 – Supersede : 26/08/08*

*Modif. : Update*

**ORIGINAL MANUAL**

***IMPORTANT : before assembly and start-up, please read and clearly understand all documents relating to this equipment (professional use only).***

*PICTURES AND DRAWINGS ARE NON CONTRACTUAL. WE RESERVE THE RIGHT TO MAKE CHANGES WITHOUT PRIOR NOTICE.*

**ADDITIONAL DOCUMENTATIONS FOR PUMP. MODEL 40-25**

<b>SPARE PARTS :</b>	Wall mounted unit	(doc. 573.257.050)
	Air motor	(doc. 573.045.050)
	Fluid section	(doc. 573.032.050)
	Reversing block	(doc. 573.087.040)
	Air supply	(doc. 573.403.050)

**KREMLIN - REXSON**

150, avenue de Stalingrad  
93 245 - STAINS CEDEX – France

☎ : 33 (0)1 49 40 25 25      Fax : 33 (0)1 48 26 07 16

**www.kremlin-rexson.com**



**SPECIFICATIONS**  
**AIRLESS PUMP, model 40-25**

**1. TECHNICAL FEATURES**

- Compact stainless steel pump
- Low maintenance and ease of use

**Recommended for :**

- Supplying one or several spray guns
- Water-based or solvent-based paints whose viscosity is lower than 1 000 mPa/s.

Motor type .....	1000-4	Air motor stroke	100 mm	4"
Pump body type .....	25	Air motor section	100 cm <sup>2</sup>	15 sq.in
Fluid pressure ratio .....	40/1	Fluid section	2,5 cm <sup>2</sup>	0.4 sq.in
		Delivery per cycle	50 cc	1.76 oz
		Number of cycle	20	76 per gallon
		Fluid delivery (30 cycles)	1,5 l	0.4 US Gal.
		Maximum air operating pressure	6 bar	88 psi
		Maximum discharge pressure	240 bar	3480 psi
		Sound level	77 dBa	77 dBa
		Maximum operating temperature	60°C	140° F

**Wetted parts :**

Hard chrome stainless steel, Stainless steel, Carbide, Polyacetale.

**Tightness packings :**

Upper, fixed : Polyfluid + PTFE G  
 Lower, mobile : GT seal

Weight .....22 kg / 48.5 Lbs

**■ FITTINGS**

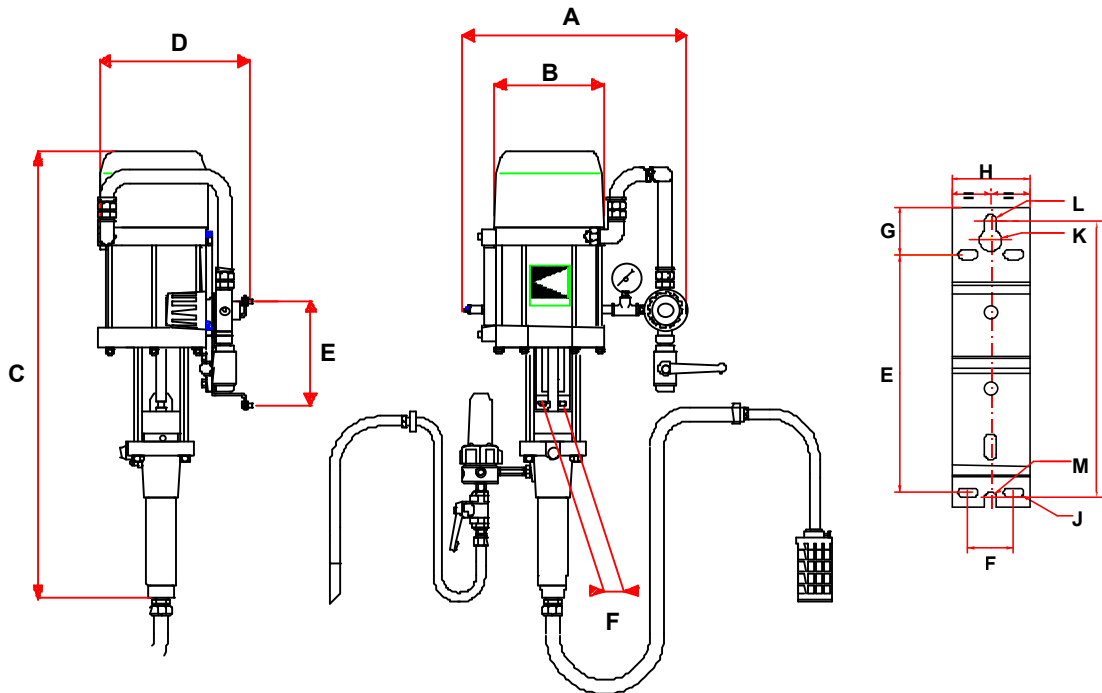
		Bare pump	Pump assembly
Air	Inlet	F 3/8 BSP	F 3/4 BSP (air supply)
Fluid	Inlet	F 1/2 BSP	Male 26 x 125
	Outlet	F 3/8 NPS	M 1/2 JIC / # 5 JIC (filter outlet)

**■ HOSES WITH FITTINGS**

Pump air supply hose (minimum Ø for a 5 m / 16.5 ft length) : Ø 16 mm / 5/8"  
 AIRLESS fluid hose (between pump fluid outlet and spray gun) : Ø 4,8 mm / 3/16"

## ■ DIMENSIONS

Ind.	mm	"	Ind.	mm	"	Ind.	mm	"
A	400	15.75	B	220	8.7	C	800	31.5
D	280	11	E	182	7.2	F	35	1.38
G	36.5	1.43	H	60	2.36	I	211.5	8.3
J	∅ 7 x 15	∅ 0.27 x 0.6	K	∅ 17	∅ 0.67	L	∅ 9	∅ 0.35
M	∅ 9	∅ 0.35						



## 2. SERVICING



### WARNING :

Before any action on the pump, shut off the compressed air supply and depressurize the systems by triggering the spray gun.

The pump is manufactured under the ATEX agreement and can not be modified. KREMLIN REXSON will not be held responsible for any failure to comply with that instruction.

Guards (motor cover, coupling shields, connectors,...) have been designed for a safe use of the equipment.  
The manufacturer will not be held responsible for bodily injury or failure and / or property damage due to destruction, the overshadowing or the partial or total removal of the guards.

#### ■ SUCTION VALVE (REFER TO DOC. 573.032.050)

Unscrew suction valve (5) by holding cylinder (2).

The ball (10) is secured on the valve (5) by means of a circlips (9).

Clean the parts.

Reinstall suction valve (5) and seal (25). Replace them if necessary.

#### ■ EXHAUST VALVE (REFER TO DOC. 573.032.050)

Unscrew cylinder (2) and pull it downwards.

Unscrew exhaust valve (6) by holding piston (3).

Remove ball (15).

Clean the parts and reinstall them. Be certain seal (8) is installed. Replace the parts if necessary.

#### ■ LOWER MOBILE PACKING

Unscrew cylinder (2) and pull it downwards.

Unscrew stuffing-box (7) to release GT seal (13) from exhaust valve (6).

Remount the parts in reverse order.

When reassembling :

- Install the GT seal onto exhaust valve (6).
- Screw stuffing-box (7).
- The seal must be blocked by screwing mobile stuffing-box (7) onto exhaust valve (6) strongly.

If necessary replace seal (8) when reinstalling cylinder (2).

#### ■ UPPER PACKING

Separate the piston rod from the motor and the piston from the fluid section.

Unscrew wetting-cup (4) by means of the wrench supplied with the pump.

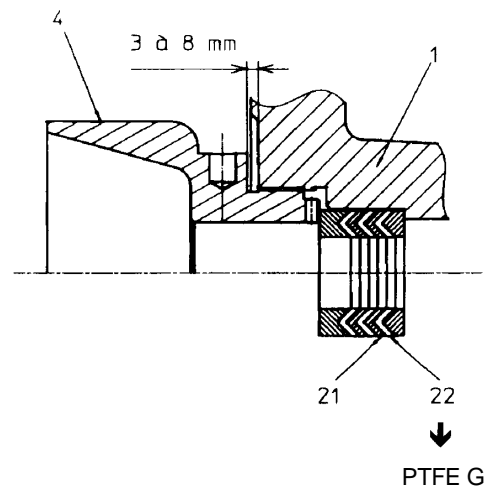
Pull piston (3) upwards to remove seals (21 and 22) from upper packing (18).

Reinstall parts in reverse order. Be certain seals (21 and 22) are installed properly (direction, order and assembly dimension).

Tighten wetting-cup (4).

**After reassembly, fill up the pump with solvent and increase pressure to maximum in the fluid section. Then stop the pump and open exhaust valve to depressurize.**

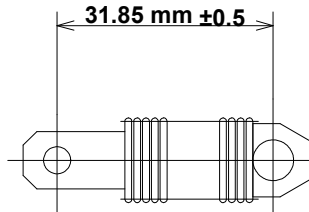
**Retighten wetting-cup (4) by means of the wrench, in order to be in accordance with the opposite drawing.**



■ REVERSING BLOCK (REFER TO DOC. 573.087.040)

**Guards (motor cover, coupling shields, connectors,...) have been designed for a safe use of the equipment.  
The manufacturer will not be held responsible for bodily injury or failure and / or property damage due to destruction, the overshadowing or the partial or total removal of the guards.**

- Disassemble cover (32) by removing the 3 CHc screws (33).
- Dissociate female yoke (12) from reversing block lever (9).
- Dismount reversing block by removing screws (10 and 8).
- Reinstall the new reversing block in the reverse order of the disassembly sequence.

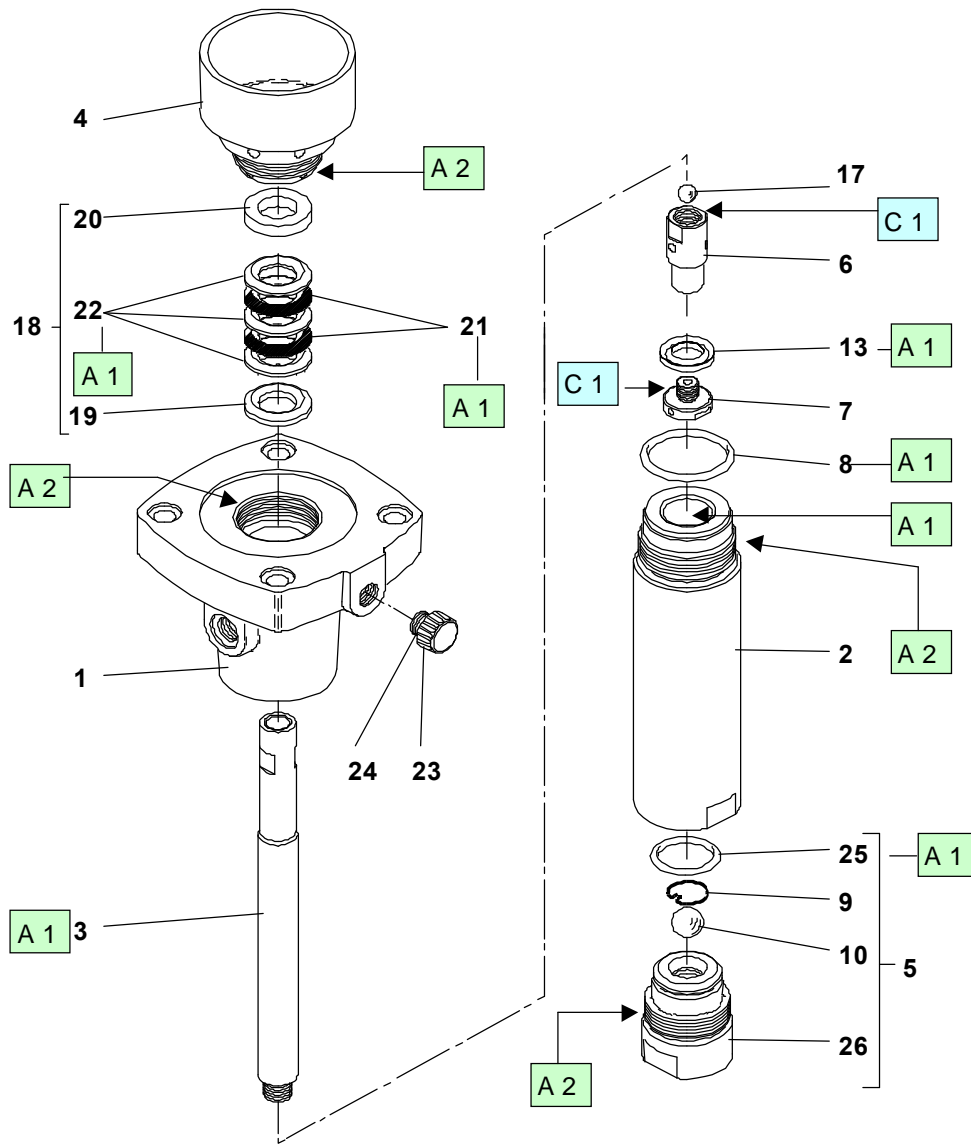


➡ **CAUTION :** The number of spirals must equally be distributed on each fastening parts in order to get the above dimension.

**Before reassembling :**

- Clean the parts with the appropriate cleaning solvent.
- Install new seals if it is necessary after having lubricated them with PTFE grease.
- Install new parts if it is necessary.

■ ASSEMBLY INSTRUCTIONS



Index	Instruction	Description	Part number
A1	PTFE grease	'TECHNILUB' grease (10 ml)	560.440.101
A2	Graphite grease	Graphite grease box (1 kg / 2.204 lb)	560.420.005
C1	Medium strength Aneorobic Pipe Sealant	Loctite 577	