



INSTRUCTION MANUAL

IN-LINE FILTER

Manual ref : 1009 573.011.112

Date : 21/09/10 - Supersede : 15/04/05 - Modif. : Update

ORIGINAL MANUAL

Dear customer,

We thank you very much for purchasing an accessory from KREMLIN range.

To get the best result, safe and efficient operation of your in-line filter, we advise you to read and make yourself familiar with this instruction and service manual.

1. SAFETY INSTRUCTIONS

- ➔ The personnel involved in operating and servicing this equipment must be aware of all the safety requirements stated in this manual. The workshop supervisor must be certain that the personnel has perfectly understood the safety instructions and complies with them.
- ➔ Use the equipment only in a properly ventilated area to maximize health care. Any misuse of the spray equipment or accessories can damage them and result in serious body injury, fire or explosion hazard.
- ➔ This equipment is installed on installations operating under pressures particularly high. Some precautions must be taken in order to prevent accidents and unsafety working conditions.
- ➔ All fittings must be tight and in good condition.
- ➔ Before cleaning or removing components of the equipment, it is compulsory :
 - to stop the pump by shutting off the compressed air supply.
 - to open the drain valve.
 - to point the spray gun into an appropriate waste receptacle and press the trigger to depressurize the system.

KREMLIN - REXSON

150, avenue de Stalingrad

93 245 - STAINS CEDEX – France

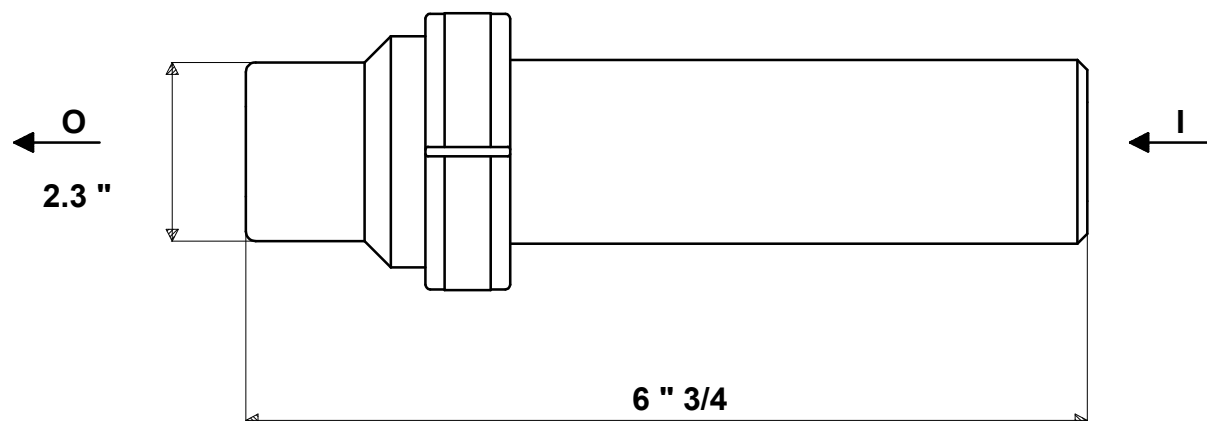
☎ : 33 (0)1 49 40 25 25 Fax : 33 (0)1 48 26 07 16

www.kremlin-rexson.com

2. TECHNICAL CHARACTERISTICS

This in-line filter is very useful when important flow-rates are required. It is designed for a full and easy flushing.

It is recommended for the 2 component pumps and colour changers.



Weight : 53 oz.

Fluid inlet : F 1/4 NPS

Fluid outlet : F 1/4 NPS

Maximum fluid pressure : 200 bar / 2900 PSI

Filter element : Screen size 6 - 168 μ (for other sizes, refer to chart "Spare parts")

Metals in contact with the material : Stainless steel and PTFE.

3. DISASSEMBLY

After depressurizing the system :

Unscrew nut (4).

Dissociate bowl (2) from base (1).

Remove screen (6) by unscrewing support (3). Clean or replace it.

Change seal (5).

Clean parts with the appropriate cleaning solvent and reinstall them in reverse.