



## SPECIFICATIONS

# AUTOMATIC AIRSPRAY GUN MODEL A 28

Manual : 0411 573.063.212

Date : 4/11/04

*Supersede :*

*Modif. :*

### ADDITIONAL DOCUMENTATIONS

<b>SPARE PARTS :</b>	<b>AIRSPRAY GUN - MODEL A 28</b>	<b>Doc. 573.189.050</b>
----------------------	----------------------------------	-------------------------

**KREMLIN REXSON** – Site de Stains : 150, avenue de Stalingrad  
93 245 - STAINS CEDEX - FRANCE  
Téléphone : 33 (0)1 49 40 25 25      Fax : 33 (0)1 48 26 07 16



**SPECIFICATIONS**  
**AUTOMATIC AIRSPRAY GUN**  
**MODEL A 28**

## 1. TECHNICAL FEATURES

The A 28 spray gun is designed for applying water-based and pigment-filled products in automatic installations. It can be fitted on fixed supports, automatic machines or on robots.

It is a diaphragm. Owing to this diaphragm, tightness between the product and air circuits is ensured.

The gun is fitted with two air adjusters : one for the fan air control (AE), one for the atomizing air adjustment (AC).

<b>Atomizing air pressure</b>	Maximum 6 bar / 87 psi
<b>Control air pressure</b>	Minimum 5,5 bar / 80 psi
<b>Fluid pressure</b>	Maximum 3 bar / 43.5 psi
<b>Fluid flow rate</b>	Dependent upon type of nozzle
<b>Air consumption</b>	24 m <sup>3</sup> /h at 4 bar / 18 cfm at 58 psi
<b>Operating temperature</b>	Maximum 50°C / 117° F
<b>Weight (without gun mounting support)</b>	1050 g / 2 lbs
<b>Materials in contact with the product</b>	Stainless steel - Treated stainless steel - PTFE - Elastomer polyurethane

### ■ FITTINGS

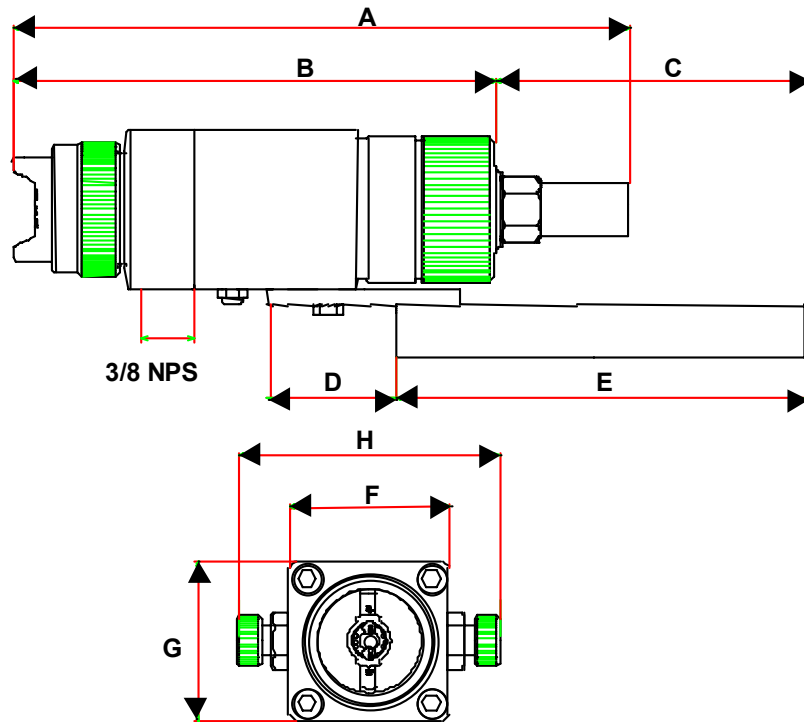
	<b>Gun</b>	<b>Recommended hoses</b>
Product	F 3/8 BSP	10 mm / 3/8 " ID
Command air	F 1/8 NPS	Ø 6 x 8 mm / 1/4 " x 5/16 "
Spraying air	F 1/4 NPS	10 mm / 3/8 " ID
Air adjusters	AE (fan air control) AC (atomizing air adjustment)	Width of the fan (flat fan → round fan) Spraying fineness

*On the gun, you can fit :*

- either 2 product fittings → product circulation
- or 1 product fitting and a plug

Fixing the complete assembly : rod Ø 16 mm / 5/8 ", length 160 mm / 6.3 ".

▪ **DIMENSIONS**

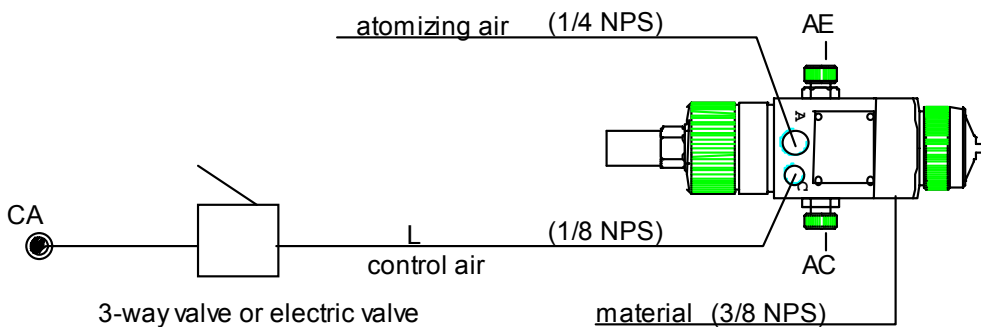


**Dimensions**

Ind.	A	B	C	D	E	F	G	H
mm	193	151	128	40	160	50	50	82
Inches	7.6	5.9	5.04	1.6	6.3	1.9	1.9	3.2

**2. INSTALLATION**

Fix the gun onto the support. Connect the fluid hoses and the air hoses.



The A28 spray gun works by pneumatic command. To make it work, it simply requires either an electronic valve or a three-way pneumatic valve. The electronic valve must be placed as close as possible to the gun (L ~ 2 m / 6.6 ft).

If the installation requires a most important distance (L) between the electronic valve and the gun, or if the use frequency is higher than 0.5 Hz, it could be better to change the hose 6mm ID x 8 mm OD / 1/4" x 5/16" with an hose 8 mm ID x 10 mm OD / 5/16" x 13/32" in order to reduce the response time.

### 3. DISMANTLING

#### ▪ NEEDLE END (IND. 10) REPLACEMENT

Shut off the air and product feeds to the gun.

Depressurize the circuits.

Unscrew aircap (ind. 1) and nozzle (ind. 2) from the gun.

Unclip needle-end (ind. 10) to separate it from needle-holder (ind. 11).

Clip the new needle-end.

Put the gun in the "OPEN" position to prevent damaging the new needle while mounting the nozzle.

#### ▪ DIAPHRAGM (IND. 14) REPLACEMENT

##### Removal

Unscrew air cap (ind. 1) and nozzle (ind. 2) from spray gun.

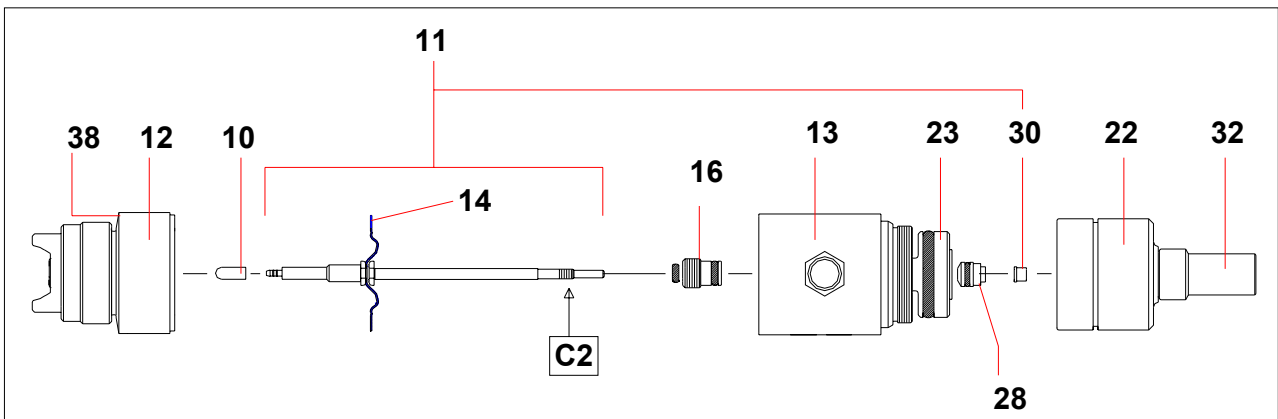
Unscrew the 4 screws (ind. 38). Remove product body (ind. 12).

Unscrew needle end (ind. 10).

Unscrew cylinder (ind. 22) to separate it from air body (ind. 13).

Unscrew nut (ind. 30).

Pull needle-diaphragm assembly (ind. 11) forwards of the spray gun.



##### Reassembly

**Provide with a new assembly "Diaphragm assembly" (ind. 11).**

Unscrew nut (ind. 30) fitted on the assembly.

Lubricate needle rod.

Insert the assembly (ind. 11) into body (ind. 13) at the front part of the spray gun.

Check the position of the piston (ind. 23) into air body (ind. 13).

Put a low strength of glue on the thread, at the end of the needle (ind. C2).

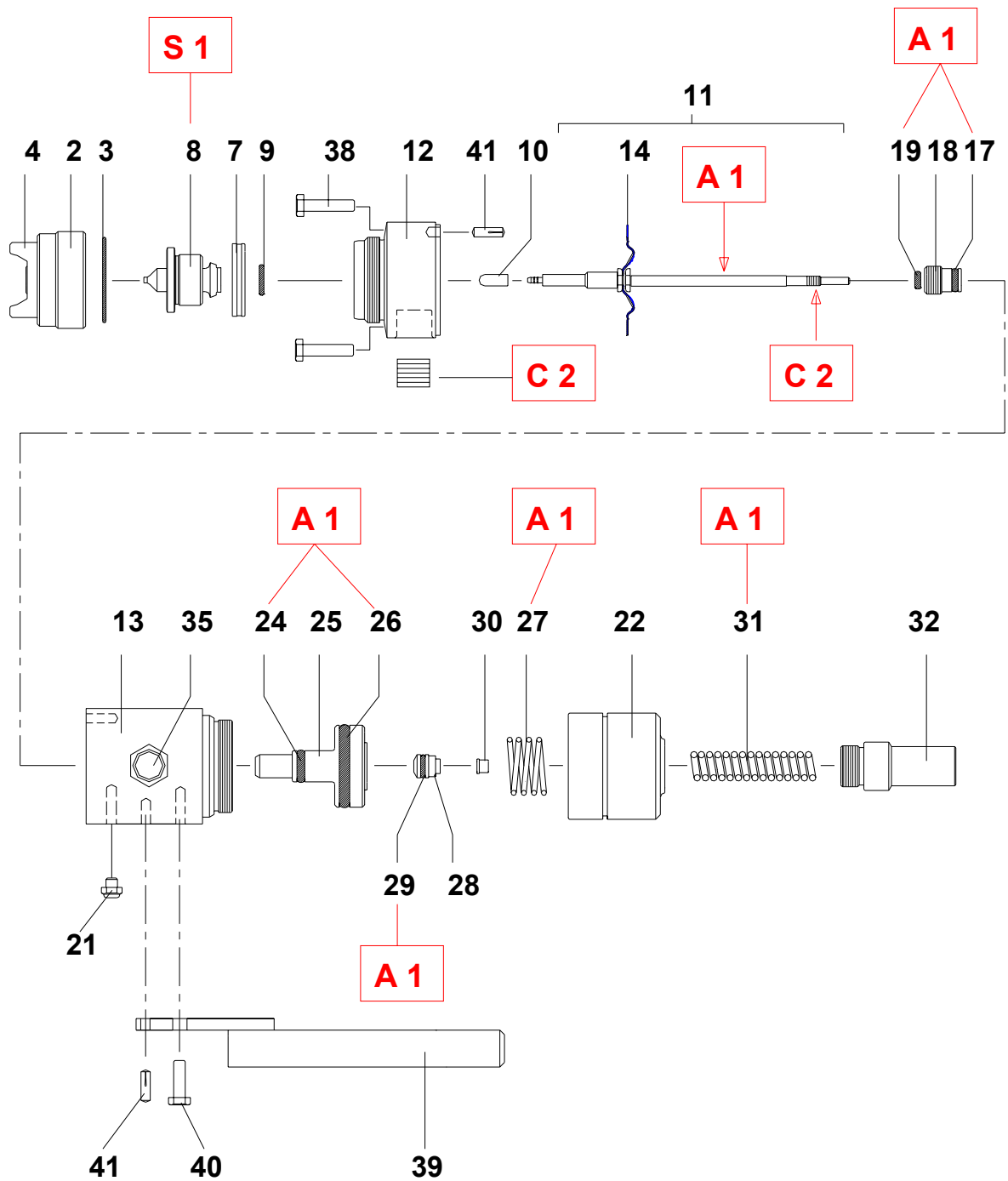
**Screw nut (ind. 30) slightly.**

Reinstall all the parts : needle end, product body, nozzle, air cap, cylinder.

Replace them if necessary.

**Warning :** Some material can flow out the nozzle during the repressurization of the gun.

## 4. ASSEMBLY INSTRUCTIONS



Ind.	Instructions	Description	Part number
<b>A 1</b>	PTFE grease	"TECHNILUB" grease (10 ml)	560.440.101
<b>C 2</b>	Low strength - Aneorobic Adhesive - Loctite 222	Glue bottle (50 ml)	554.180.010
<b>S 1</b>	Screwing torque :	9 - 11 Nm / 6.6 to 8.1 ft/lbf	