



## SPECIFICATIONS

# AUTOMATIC AIRSPRAY GUN MODEL A3

Manual : 0501 573.060.212

Date : 4/01/05

*Supersede* : 19/07/04

*Modif.* : Fitting for hose 4x6 (control air)

## ADDITIONAL DOCUMENTATIONS

<b>SPARE PARTS :</b>	<b>AIRSPRAY GUN - MODEL A3</b>	<b>Doc. 573.294.050</b>
----------------------	--------------------------------	-------------------------

**KREMLIN REXSON** – Site de Stains : 150, avenue de Stalingrad  
93 245 - STAINS CEDEX - FRANCE  
Téléphone : 33 (0)1 49 40 25 25      Fax : 33 (0)1 48 26 07 16



<p><b>SPECIFICATIONS</b></p> <p><b>AUTOMATIC AIRSPRAY GUN - MODEL A3</b></p>
------------------------------------------------------------------------------

## 1. TECHNICAL FEATURES

The A 3 spray gun is designed for applying paints and adhesives in automatic installations. It can be fitted on fixed supports, automatic machines or on robots.

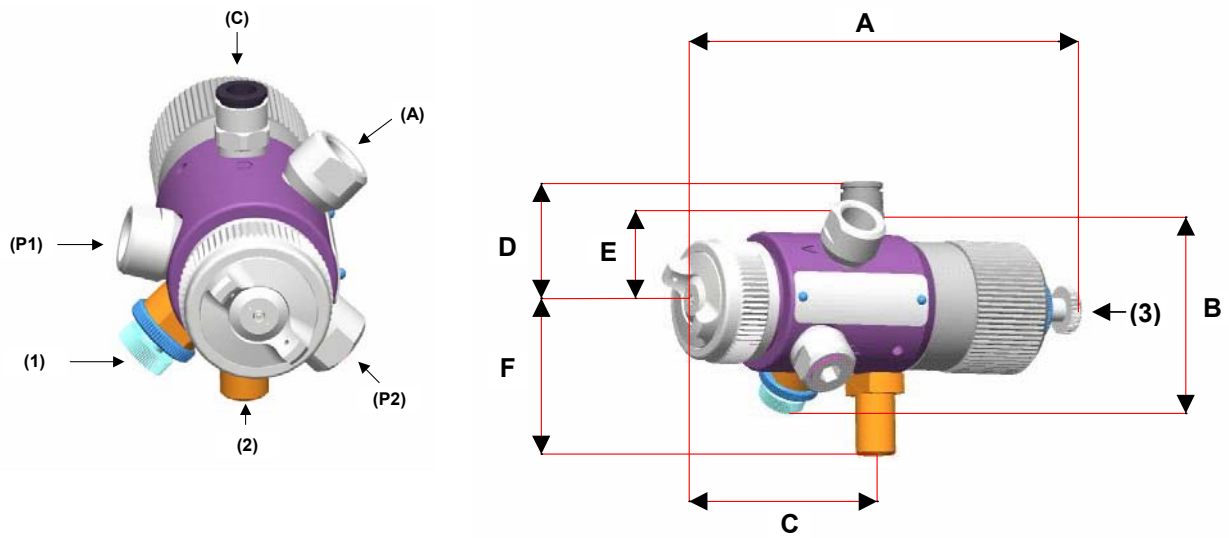
It is a miniature spray guns for fine works. It enables to obtain narrow and light spray fan patterns. When using the correct projector, it allows the spraying of lines. It is an air bleedind spray gun. It is fitted with 2 fluid inlets.

<b>Atomizing air pressure</b>	From 3 to 5 bar / from 43.5 to 72.5 psi
<b>Control air pressure</b>	3 bar / 43.5 psi mini
<b>Fluid pressure</b>	6 bar / 87 psi maxi
<b>Fluid flow rate</b>	Dependent upon type of nozzle (180 to 450 cm <sup>3</sup> /mn)
<b>Air consumption</b>	20 m <sup>3</sup> /h maxi
<b>Operating temperature</b>	50°C / 117° F maxi
<b>Weight</b>	320 g / 70.5 lb
<b>Materials in contact with the product</b>	Aluminium - Stainless steel - Treated stainless steel

### ■ FITTINGS

	<b>Spray gun</b>	<b>Spray gun assembly</b>
Fluid (P 1)	F 1/8 BSP	M 1/8 NPT - M 1/4 NPS
Fluid (P 2)	F 1/8 BSP	M 1/8 NPT - M 1/4 NPS or plug
Control air (C)	Fitting for hose 4x6	-
Atomizing air (A)	F 1/8 NPS	M 1/8 NPT - M 1/4 NPS
(1)	Fan adjustment	→ Fan air control
(2)	Gun mounting pin	support : rod Ø 16, length 70 mm / 2.8"
(3)	Adjustment knob	→ Fluid flow rate control

■ **DIMENSIONS**



**Dimensions**

Ind.	A	B	C	D	E	F
mm	113	65	57	38	31	38
"	4.45	2.56	2.24	1.50	1.22	1.50

**2. DISMANTLING**

■ **PISTON PACKING (IND.18)**

Unscrew cylinder (ind. 23) - (take care not to damage the spring ind. 22).

Take hold of the entire needle and piston assembly (ind. 10 and 16) and pull them towards the back.

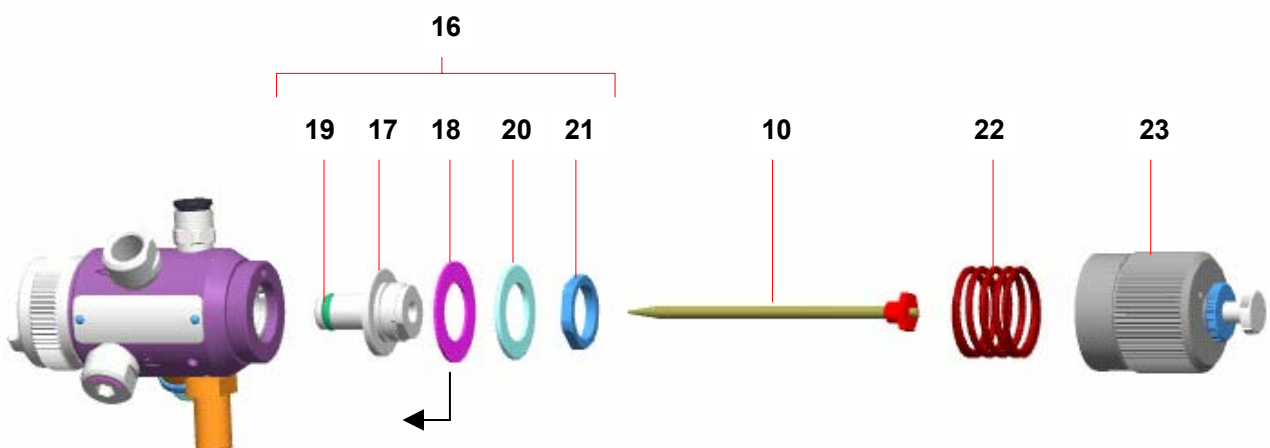
Unscrew nut (21). Remove support washer (20) as well as packing (18).

Clean the parts and change them if necessary.

When reinstalling :

**Before inserting piston (17), the packing lip (18) must be shaped by hand as shown opposite.**

Glue nut (21) on piston (17) with Low strength - Aneorobic Adhesive - Loctite 222. Change seal (19).



■ **PACKING HOLDER (IND.13)**

Unscrew cylinder (ind. 23) - (take care not to damage the spring ind. 22).

Take hold of the entire needle and piston assembly (ind. 10 and 16) and pull them towards the back.

Unscrew sleeve (ind. 26).

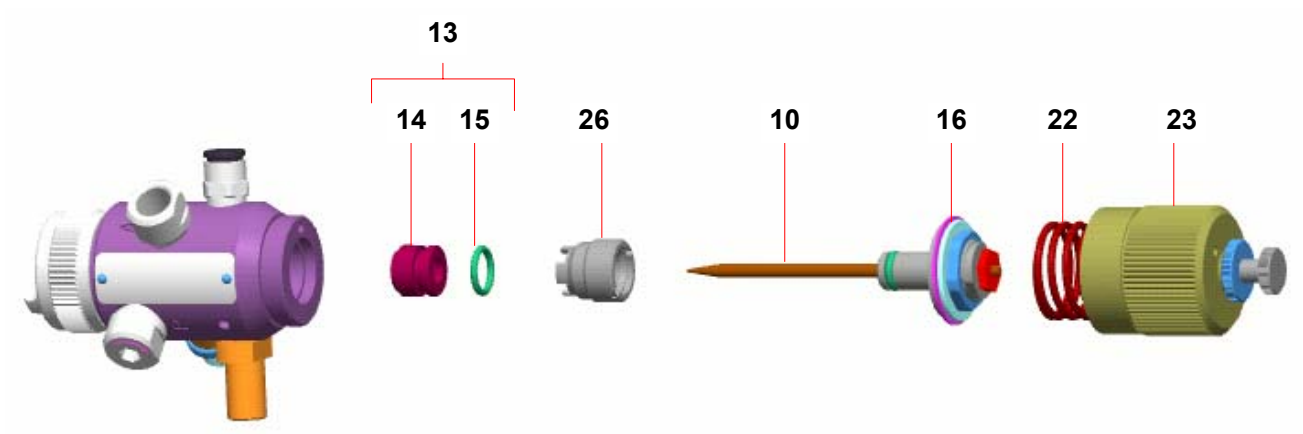
Remove the packing holder (ind. 13) by the rear part of the spray gun.

Clean the inside of the spray gun with solvent and blow out with air.

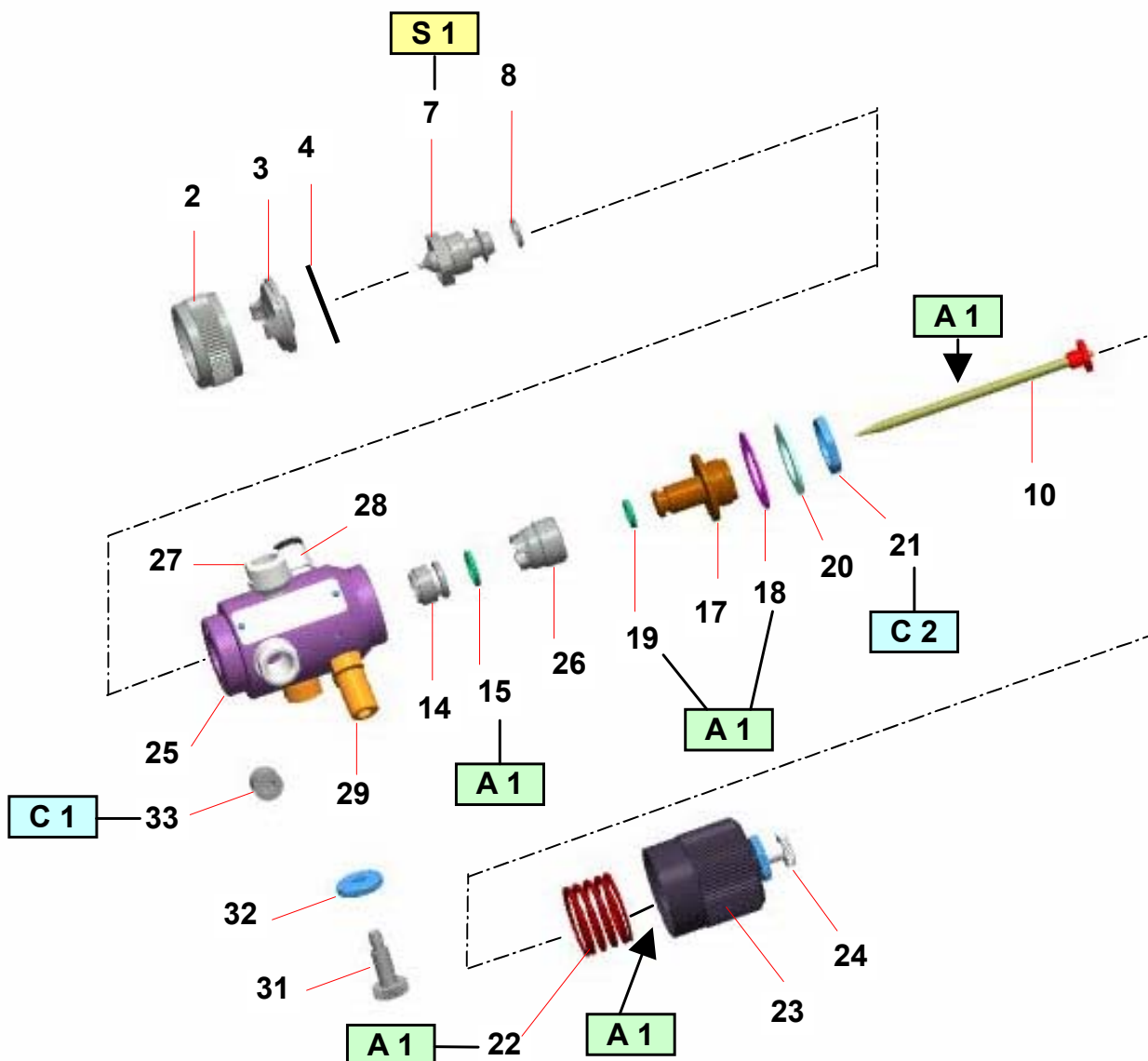
Change packing holder (13).

When reinstalling, drive packing holder by pushing it inside the body until it comes into contact with the body.

Replace all the parts and change the seals.



### 3. ASSEMBLY INSTRUCTIONS



Ind.	Instructions	Description	Part number
<b>A 1</b>	PTFE grease	"TECHNILUB" grease (10 ml)	560.440.101
<b>C 1</b>	Medium strength - Aneorobic Pipe Sealant - Loctite 577	"SUPER SEAL" glue (3 ml)	554.180.017
<b>C 2</b>	Low strength - Aneorobic Adhesive - Loctite 222	Glue bottle (50 ml)	554.180.010
<b>S 1</b>	Screwing torque : 18 Nm / 13.28 ft/lbf		