



SPECIFICATIONS

AIRLESS PUMP

model 40-25 F

Manual : 1003 573.029.212

Date : 23/03/10 – Supersede : 26/08/08

Modif. : Update

ORIGINAL MANUAL

IMPORTANT : before assembly and start-up, please read and clearly understand all documents relating to this equipment (professional use only).

PICTURES AND DRAWINGS ARE NON CONTRACTUAL. WE RESERVE THE RIGHT TO MAKE CHANGES WITHOUT PRIOR NOTICE.

ADDITIONAL DOCUMENTATIONS FOR PUMP, MODEL 40-25 F

SPARE PARTS :	Wall mounted unit	(doc. 573.121.050)
	Air motor	(doc. 573.045.050)
	Fluid section	(doc. 573.115.050)
	Reversing block	(doc. 573.087.040)
	Air supply	(doc. 573.403.050)

KREMLIN - REXSON

150, avenue de Stalingrad
93 245 - STAINS CEDEX – France

 : 33 (0)1 49 40 25 25 Fax : 33 (0)1 48 26 07 16

www.kremlin-rexson.com



SPECIFICATIONS
AIRLESS PUMP, model 40-25 F

1. TECHNICAL FEATURES

- Air operated piston pump (stainless steel) - with a bellows seal fluid packing.
- Low maintenance and ease of use - Use without lubrication.

Recommended for :

- Supplying one or several spray guns.
- Water-based or solvent-based paints whose viscosity is lower than 1 000 mPa/s.

Motor type1000-4
 Pump body type25 F
 Theoretical pressure ratio.....40/1
 Effective pressure ratio..... 34/1

Air motor stroke	100 mm	4"
Air motor section	100 cm ²	15 sq.in
Fluid section	2,5 cm ²	0.4 sq.in
Delivery per cycle	50 cc	1.76 oz
Number of cycle	20 per liter	76 per gal
Fluid delivery (30 cycles)	1,5 l	0.4 Usgal
Maximum air operating pressure	6 bar	88 psi
Maximum discharge pressure	204 bar	2959 psi
Noise level	72 dBa	72 dBa
Maximum operating pressure	50°C	122° F

Wetted parts :

Hard chrome stainless steel, Stainless steel, Carbide.

Tightness packings :

Bellows : Polyethylene
 Upper, fixed : GT (polyethylene)
 Lower, mobile : GT (polyethylene)

Weight 27 kg / 59.5 Lbs

■ FITTINGS

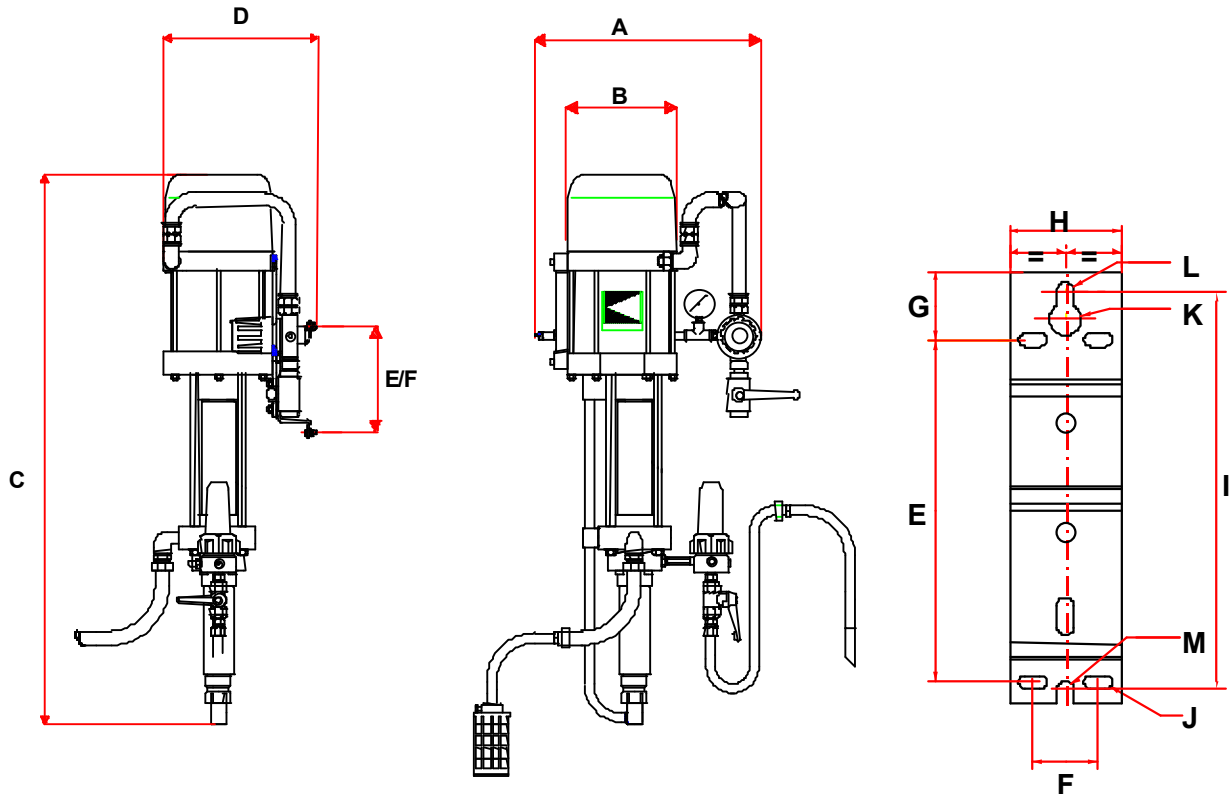
		Bare pump	Pump assembly
Air	Inlet	F 3/8 BSP	F 3/4 BSP (Air supply)
Fluid	Inlet	F 1/2 BSP	Male 26 x 125
	Outlet	F 3/8 NPS	Male 1/2 JIC / # 5 JIC (Filter outlet)

■ HOSES WITH FITTINGS

Pump air supply hose (minimum Ø for a 5m / 16.5 ft length) : Ø 16 mm / 5/8"
 AIRLESS fluid hose (between pump fluid outlet and spray gun) : Ø 6,5 mm / 3/16"

DIMENSIONS

Ind.	mm	"	Ind.	mm	"	Ind.	mm	"
A	400	15.75	B	220	8.7	C	975	38.4
D	280	11	E	182	7.2	F	35	1.38
G	36.5	1.43	H	60	2.36	I	211.5	8.3
J	∅ 7 x 15	∅ 0.27 x 0.6	K	∅ 17	∅ 0.67	L	∅ 9	∅ 0.35
M	∅ 9	∅ 0.35						



2. SERVICING



WARNING :

Before any action on the pump, shut off the compressed air supply and depressurize the systems by triggering the spray gun.

The pump is manufactured under the ATEX agreement and can not be modified. KREMLIN REXSON will not be held responsible for any failure to comply with that instruction.

DISASSEMBLY / REASSEMBLY OF THE FLUID SECTION

Guards (motor cover, coupling shields, connectors,...) have been designed for a safe use of the equipment.
The manufacturer will not be held responsible for bodily injury or failure and / or property damage due to destruction, the overshadowing or the partial or total removal of the guards.

Unscrew fitting (38) and screws (41 and 43) to remove attachment fluid tube (39).

■ SUCTION VALVE (DOC. 573.115.050)

Unscrew suction valve (35) by holding cylinder (27).

The ball (22) is secured on the valve (35) by means of a circlips (21).

Clean the parts.

Reinstall suction valve (35) and seal (23). Replace them if necessary.

■ EXHAUST VALVE AND MOBILE PACKING

Unscrew cylinder (27) and pull it downwards.

Unscrew stuffing-box (33) to release GT seal (31) from exhaust valve (34).

Unscrew exhaust valve (34) by holding piston (24).

Remove ball (32).

Clean the parts and reinstall them. Replace them if necessary.

■ UPPER TIGHTNESS SEAL

Unscrew the 4 screws (30).

Remove tightness seal (28) by pulling discharge flange (25) downwards.

Replace tightness seal (28), O-Rings (29 and 11).

Reinstall the parts in the reverse order of the disassembly sequence.

DISASSEMBLY / REASSEMBLY OF THE COUPLING (BELLOWS)

Disassemble the fluid section prior to carrying out the following procedure :

■ BELLOWS

Unscrew nuts (14) from the tie-rods.

Remove suction flange (1) and cylinder (2) by pulling them downwards.

Remove screws (12) to separate suction bearing (3) from air motor.

Dissociate intermediate piston (9) from air motor rod.

Remove coupling parts.

Remove bellows flange (4) by unscrewing screws (12) to free the upper part of the bellows.

Unscrew skirt (8) to free the lower part of the bellows. Replace bellows (5).

When installing bellows push it into skirt firmly (8).

Insert intermediate piston (9) into bellows (5) and screw the skirt at the piston end.

Insert bellows and piston (9) into the suction bearing (3).

Insert flange (4) in the suction bearing (3) and tighten the whole with screws (13).

Connect bellows-piston set to motor rod and secure the whole on the lower support of the air motor by using screws (12).

Reinstall fluid section piston (24) on intermediate piston (9).

Replace seals (11). Then install cylinder (2) and suction flange (1).

Install the whole on tie-rods and tighten it with nuts (14).

AIR MOTOR

Guards (motor cover, coupling shields, connectors,...) have been designed for a safe use of the equipment.

The manufacturer will not be held responsible for bodily injury or failure and / or property damage due to destruction, the overshadowing or the partial or total removal of the guards.

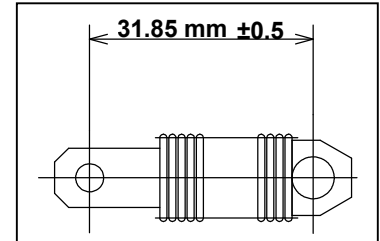
■ REVERSING BLOCK (DOC.573.087.040)

Disassemble cover (32) by removing the 3 CHc screws (33).

Dissociate female yoke (12) from reversing block lever (9).

Dismount reversing block by removing screws (10 and 8).

Reinstall the new reversing block in the reverse order of the disassembly sequence.

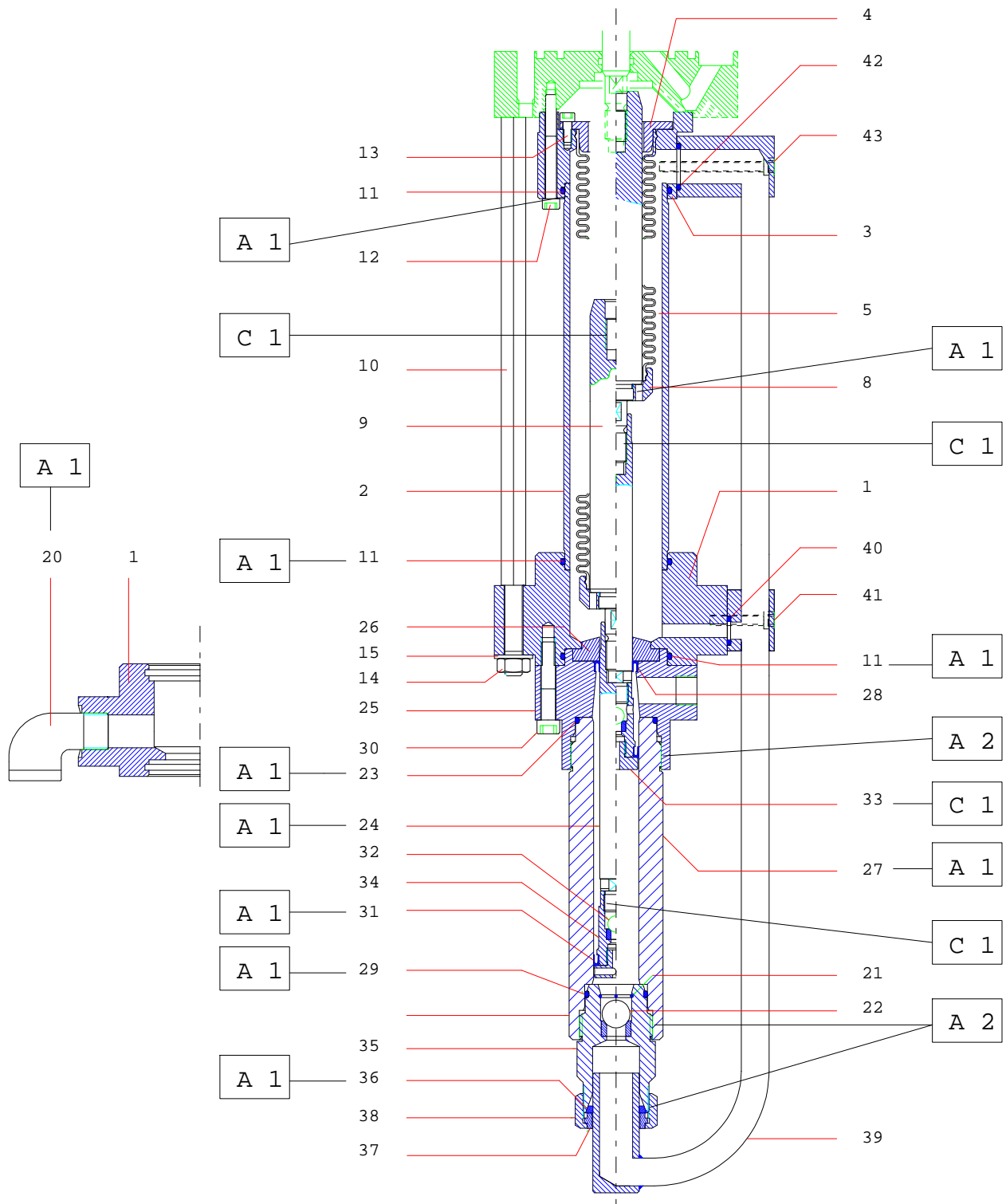


- ⚠ **CAUTION :** The number of spirals must equally be distributed on each fastening parts to get the above dimension.

Before reassembling :

- Clean the parts with the appropriate cleaning solvent.
- Install new seals if it is necessary after having lubricated them with PTFE grease.
- Lubricate the piston and the inside of the cylinder to prevent from damaging the seals.
- Install new parts if it is necessary.

■ ASSEMBLY INSTRUCTIONS



Index	Instruction	Description	Part number
A1	PTFE grease	'SUPER LUB' grease (10 ml)	560.440.101
A2	Graphite grease	Graphite grease box (1 kg)	560.420.005
C1	Medium strength Aneorobic Pipe sealant	Loctite 577	